



SUPPORTING YOUR TEAM.
BUILDING A LEGACY.

20
25
—
26

USCSA NORDIC TEAMS GUIDE

Table of Contents



2. Contents

4. Introduction

5. Acknowledgements

6. Eastern Region

7. Clarkson University

9. Colby College*

11. Cornell University

13. Dartmouth College*

15. McGill University

17. Middlebury College*

19. Northeastern University

21. Paul Smith's College

23. Smith College

27. United States Military Academy
at West Point

25. University of Maine Farmington

29. University of Vermont*

31. Wellesley College

Did Not Provide Information

Hamilton College

33. Midwest Region

35. Carleton College

37. College of St. Benedict
& St. John's University

39. St. Olaf College

41. Michigan Technological University*

43. St. Mary's University of Minnesota

45. University of Minnesota - Duluth

47. University of Minnesota - Twin Cities

49. University of Notre Dame

51. University of Wisconsin - Eau Claire

53. University of Wisconsin - Madison

Did Not Provide Information

Luther College

University of St. Thomas

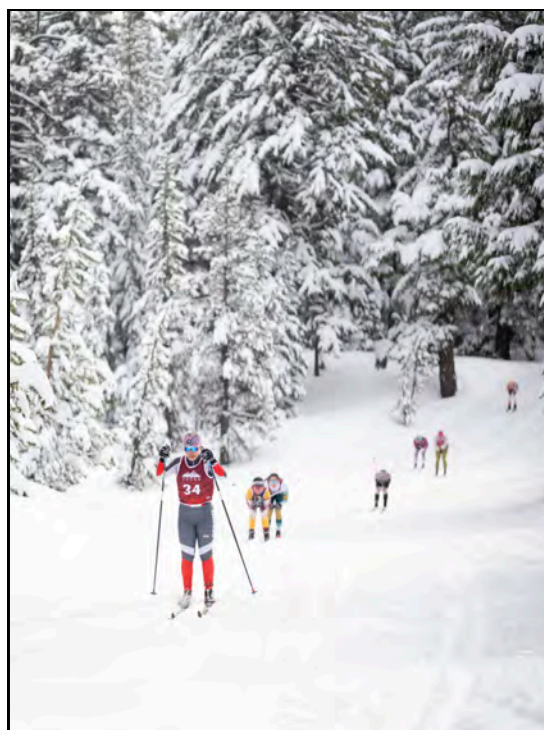
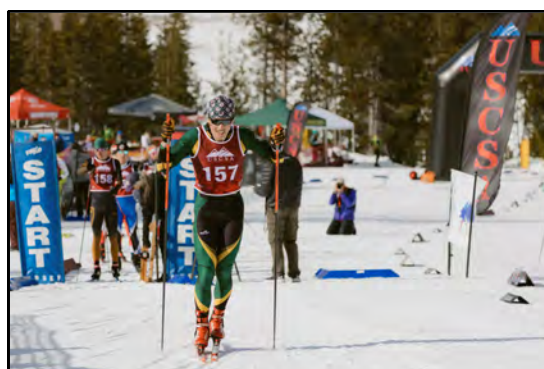


Table of Contents



55. Western Region

- 57. Colorado College
- 59. Colorado Mesa University
- 61. Colorado State University
- 63. Montana State University*
- 65. United States Air Force Academy
- 67. University of Colorado Boulder*
- 69. University of Wyoming
- 71. Western Colorado University
- 73. Whitman College

* Indicates an Associate Team competing under USCSA Rule 2.1.3.1 (subject to limited exceptions).

Information in this Guide was provided by USCSA Nordic Teams as of September 2025.

For a live list of USCSA member institutions in 2025-26, refer to the USCSA's [Member Institutions Page](#).

This page will update as Nordic Teams register themselves for the coming season.

You can also confirm a Nordic Team's registration via the contact information listed in this Guide.



Introduction



Welcome To Your College Ski Team

You have an important decision to make. We want skiing to be part of it.

At the United States Collegiate Ski & Snowboard Association (USCSA), we believe students shouldn't have to choose between rigorous academics, focused career development, and competitive ski racing. Whether you're seeking a varsity-level program or a community-oriented club, **we have a USCSA Nordic ski team that's right for you.**

Our Nordic athletes attend over 35 schools across the United States. They study at flagship public universities, leading research institutions, and small, private colleges. They race at intercollegiate events, and at world-renowned citizen events. They are elite-level competitors and recreational skiers. And, there are more of them each year: the USCSA has added over 15 Nordic programs since 2020.

USCSA Nordic teams authored each of the pages in this Guide. The information they provided is accurate to the 2025-26 season, and **focused on recruiting you.**

Starting college shouldn't mean ending your time on skis. As you choose your path in higher education, contact a USCSA Nordic program.

We Are *The* Federation For Collegiate Team Ski Racing

Each of the USCSA's three Nordic Regions—East, Midwest, and West—support robust, inclusive, interstate competition throughout the winter season. Teams and individuals who excel in Regional-level racing qualify to compete at the U.S. Collegiate Ski & Snowboard National Championships each March. The National Championships bring together top-tier athletes from each of the USCSA's sport divisions (Alpine, Nordic, Snowboard, and Freeski): 685 athletes representing 75 colleges competed at the 2025 Championships.

The USCSA is a distinct alternative to the National Collegiate Athletic Association (NCAA). Since 1974, the USCSA has believed that student-athletes of all levels and abilities should have access to a quality and exciting venue of competition. Our organization also recognizes "student" comes before "athlete," and for our members to be successful individuals, academics should take priority. Today, we support roughly 5,000 snowsport student-athletes across over 140 schools.

If your institution does not have a USCSA Nordic program, we can help you get one started. To learn more, visit <https://www.uscsa.org/>.

New in 2025, **USCSA Nordic is building our Pacific Northwest Region.** To get involved, email Nathan Grothe at ngrothe55@gmail.com; cc Rachel Urban: northwest_coordinator@uscsa.org.

Acknowledgements



USCSA Nordic programs submitted the information listed on each page. However, USCSA student volunteers were the driving force behind this project.

They contacted teams, tailored survey questions, collected responses and photos, collated and polished details, and created each team's unique pages. Their energy, focus, and persistence are to thank for this Guide—and are emblematic of the student initiative and excellence prioritized by the USCSA.



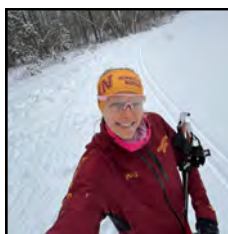
EMMA REINEKE: PROJECT LEADER

*Nordic Commissioner, MCSA
Nordic Student Representative, USCSA
Past President, University of Minnesota-Twin Cities Nordic Ski Club*



KENNA KAREL: EASTERN REGION LEADER

*Nordic Student Coordinator & Midwest Nordic Assembly President, MCSA
Vice President, University of Minnesota-Duluth Nordic Ski Club*



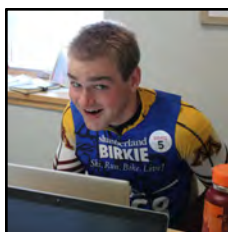
HADLEY JENSEN: MIDWEST REGION LEADER

USCSA-MCSA Liason, University of Minnesota-Twin Cities Nordic Ski Club



JUSTIN ARNDT: WESTERN REGION LEADER

*PSIA-AASI Cross Country National Team Ski Instructor, Big Sky Resort
Co-Founder & Alumnus, Colorado State University Nordic Ski Club*



LUKE DYKOWSKI: PROJECT ADVISOR

*Nordic Coordinator, MCSA
Founder, MCSA Nordic Division*

PAST CONTRIBUTORS:

Jeff Hodgson, *Cornell University Ski Club; USCSA Nordic Student Representative*
Benjamin Martin, *University of Wisconsin-Madison Nordic Ski Club*

Eastern Region

Eastern Collegiate Ski Conference (ECSC)



By Torin La Liberte & John Thompson

ECSC Nordic covers USCSA Nordic racing for all of New England and New York, with over a dozen schools representing 200 athletes across six states and Quebec!

Our season typically consists of five to six race weekends in January and February, with the first three or four comprising our regular season, and the latter two serving as our Divisional and Regional Championships. Unique to the ECSC, all but one of our race weekends are standalone ECSC races, hosted and attended entirely by our member schools. We do include some New England Nordic Ski Association (NENSA) programming into our schedule each year, with this season including the White Mountain Classic and Jackson Jaunt hosted by Jackson Ski Touring Foundation.

Thanks to running our own series, we can be quite creative in what races we host every weekend. While we aim to include each of the USCSA National Championship formats (Sprints, 7.5k, 15k, and Sprint Relays) at least once throughout the regular season, we also race Skiathlons, Criteriums, and Cross-Country Cross (XCX) races during our season. Additionally, at Divisionals we celebrate the funner side of skiing with everyone's favorite event of the year, the Three-Legged Ski Race!

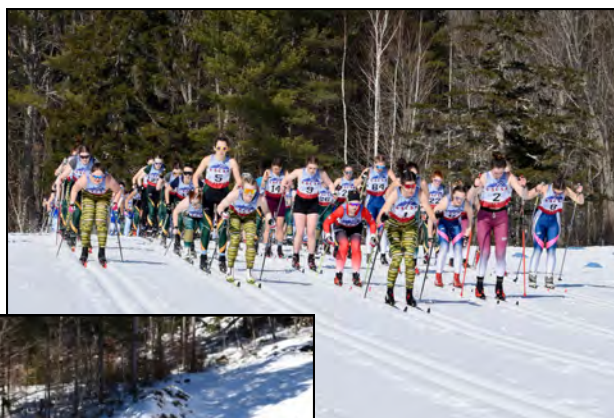
The ECSC is allocated spots for five Men's Teams and five Women's Teams to qualify for the USCSA National Championships, with qualification based on the results of our Regional Championships (typically including Sprints and a 7.5k Individual Start). We also have allocations for up to 6 individuals each from our Men's and Women's fields who place in the top-20 at our Regional Championships.

ECSC Website:

<https://sites.google.com/site/ecscnordic/home>

Contact:

Torin La Liberte: ECSC Nordic Coordinator
ecscnordic@gmail.com





Clarkson
University

General Information

Team Name: Clarkson Nordic Skiing

Location: Potsdam, NY

Team Size: 20-25

Conference: Eastern

Contact: dhatton@clarkson.edu

Clarkson Nordic represents a time-tested tradition not only in the history of Clarkson University, but also in this community, and in the USCSA as a whole. At Clarkson University Nordic, our goal is to build a culture of excellence in college cross country skiing that reflects the values of determination, student-athlete, and community. We aim to develop well-rounded skiers who excel both on the trails and in the classroom. We are known for: being one of the top nordic teams in the Eastern US, regularly competing in the Eastern Collegiate Ski Conference (ECSC) and advancing to the United States Collegiate Ski and Snowboard Association National Championships (USCSA). The mission of Clarkson Nordic is to develop student-athletes into life long skiers, and to foster a love of the sport that transcends the boundaries of Clarkson University.



Team Structure

Clarkson Nordic employs both a full time paid Head Coach and a Graduate Student Assistant.

This year, Clarkson welcomes Coach Dana Hatton as the new Head of the Nordic Ski Program, taking over from previous coach, Torin La Liberte. Dana brings a strong background as a collegiate skier, experienced coach, and passionate advocate for student-athlete development.

Team captains and leaders will be identified closer to the start of the season.

Notable Mentions

Clarkson Nordic was founded in 1964 and has been a member of the USCSA since 1985.

Our coaching staff also works with the Cross Country running team. The numbers on our team are continuing to build. We have shown great achievement over the past few years, competitively finishing as team in first and second place regularly.

Men's Team 2024 USCSA National Champions plus 3 Overall All-Americans.

Clarkson Nordic Skiing

Practices

Located just an hour and a half away from Lake Placid in the beautiful Adirondacks, Clarkson offers outstanding access to world-class terrain. Our skiers begin on-snow training at Mt. Van Hoevenberg as soon as mid-to-late November and complement it with rollerskiing, mountain biking, trail running, and bounding workouts on nearby trails. Higley Flow State Park, only twenty minutes away, is our primary practice location during the winter.

Official practices start in Mid-October and go through Nationals in March. Practices take place 4-6 times a week, with races on the weekend. Additionally there are weight room lifting sessions twice a week starting in September. Suggested training is sent out during the off-season.



Trips/Events

Our training camps, usually a week, have varied from skiing at different places in Canada and or Lake Placid in December.

We typically host a race each season in the area.

Race Schedule

There are typically 6 race weekends starting in Mid-January for the ECSC/USCSA races. When the schedule allows, we hop into other higher level USSS races. Race distances range from 5K to 20K, and include sprints, relays, individual and mass starts. All races are required. Travel expenses are covered by the team.

2025-2026 Race Schedule:

Jan 10-11 - Jackson Ski Touring, Jackson, NH
Jan 17-18 - Sleepy Hollow Inn, Huntington, VT
Jan 24-25 - Rikert Outdoor Center, Ripton VT
Jan 31-Feb 1 - Titcomb Mountain, Farmington, ME
Feb 7-8 - Paul Smith's College, Paul Smith's, NY
Feb 14-15 - North Creek Snow Bowl, North Creek, NY (Regionals)
Mar 10-14 - USCSA National Championships at Mt. Van Hoevenberg in Lake Placid, NY.



Joining the Team

Practices and races are mandatory, unless there's a valid reason for absence. Race entry, lodging, travel, Mt. Van Hoevenberg season passes, and wax service is all included. Some team apparel purchases are typical, but not required. No team fees or dues. No Athletic Scholarships are available as we are a Division III Varsity Team.

Prospective skiers can reach out to Head Coach, Dana Hatton at dhatton@clarkson.edu or fill out a recruiting questionnaire on our website.



Colby College

General Information

Team Name: Colby Club Nordic Skiing

Location: Waterville, ME

Team Size: ~80 with 8 racers

Conference: Eastern

Contact: smwill28@colby.edu

The Nordic Ski Club is a team where Nordic skiers can continue to pursue their passion for skiing in college and newcomers can step on skis for the first time. This team gives students the opportunity to be outside in the snow together and compete at a less intense level than varsity sports teams. The club welcomes skiers of all levels and allows students to stay active in the outdoors during the cold winter months.



Team Structure

Colby Club Nordic is entirely student led! Club leaders function as a combination of captains and coaches, organizing everything from practices to race weekend lodging to wax calls. Our goal as leaders is to teach as many people as possible the skills to lead the team in the future in order to ensure that it continues to be successful.

All abilities welcome (no previous skiing experience required)

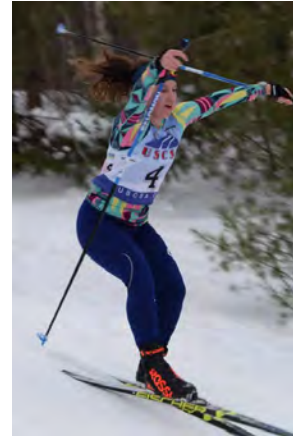
Notable Mentions

Colby Club nordic skiing joined the USCSA in 2024, making it one of the USCSA's newest teams. We managed to attend almost all of the regular season race weekends, and we consistently had five members racing. For the 2025-2026 season, we already have twenty students interested in racing! However, our goals as a team also include introducing newcomers to the sport, which is why we run learn-to-ski practices throughout the season in addition to training for racing. Last season a member of the racing team took home first place at the ECSC Regionals.

Colby Club Nordic Skiing

Practices

In the fall, we focus on strength training and rollerskiing (for those who are interested). Complete training plans are also available for dedicated skiers, and we encourage our members to participate in other clubs like Cycling Club and Run Club in the fall. We usually rollerski 1-2 times per week and strength train 2x per week. In November/December when we have snow at Quarry Road, we begin on-snow practices 3-4x per week. We begin with several learn-to-ski practices for newcomers. Depending on interest, we sometimes continue with learn-to-ski practices throughout the winter, led by more experienced members of the club. Racers will also practice together to train for the ECSC circuit.



Trips/Events

While we have not had any training trips so far, we are hoping to go to Fort Kent, ME or Craftsbury, VT for a team trip in the 2025-2026 season.

Race Schedule

We participate in the Eastern Collegiate Ski Conference (ECSC) races in January, February, and March, which culminates in the USCSA national championship. We also have the option to participate in local citizen races at Quarry Road and around Maine, but the ECSC circuit is our main focus. The race season typically consists of six regular season race weekends (with regionals being the sixth race weekend), followed by the national championship races. We race a mixture of sprints, team sprints, and distance races with the ECSC!



Joining the Team

Colby College nordic skiing is open to everyone. There is no previous skiing requirement, and all practices and races are optional. We ask that members who are racing pay for their USCSA registration fee, but we cover most other expenses depending on the year and our funding. In the past, club funding has covered most transportation, lodging, food, and racing costs each weekend. Scholarships are available to skiers who need it. To join, reach out to us on Instagram or contact smwill28@colby.edu!



Cornell University

General Information

Team Name: Cornell Nordic

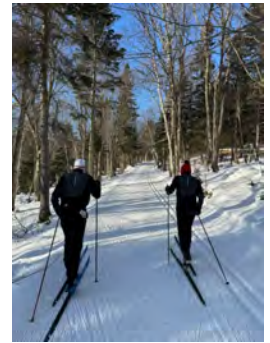
Location: Ithaca, NY

Team Size: 35

Conference: East/Mideast

Contact: ac2535@cornell.edu

Cornell Nordic is committed to instructing recreational skiing and ski racing to athletes of all abilities. We welcome all people to visit us at our regularly scheduled practice in the Fall and racing season.



Team Structure

Cornell Nordic is entirely student-run! This year, we have 6 captains, each of whom is filling a unique role, including President, vice president, treasurer, training chair, social chair, and gear manager.

All abilities welcome (no previous skiing experience required)

Notable Mentions

Founded in 1934, Cornell Ski team added a women's team in 1975 and joined USCSA in 1994.

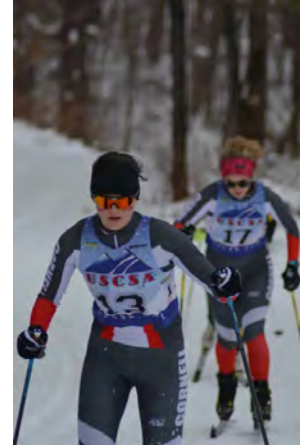
In the 2024 season our women's team took home first place in the regional competition while our men earned third place. Both teams finished sixth at nationals in Lake Placid, NY.

We are entirely student run, and as such are able to make our own training plans and incorporate more new skiers into our team. Over the past 4 years, around half of our team only started skiing in College, and we have a good number of brand new skiers every year. We routinely achieve our ultimate goal of allowing someone new to skiing in College to attend Nationals after only a few years on the team.

Cornell Nordic

Practices

During the fall semester, we usually have four weekly practices: two roller ski practices, a cross-training day, and the always anticipated frisbee Friday. During the spring semester, we organize on-snow training at local ski areas (weather permitting). All practices are lead by team captians. Outside of regular season taining we have summer training plan for those who want to advance over the summer.



Trips/Events

Ski Camp! We go to Mont Sainte Anne in Quebec, Canada, every year for a week-long training camp. We also host many other social events that are shared with team members throughout the year, including pumpkin carving, waxing potlucks, and Fordic (Nordic formal).

Race Schedule

UVM Invitational @ Sleepy Hollow
Middlebury Invitational @ Rikert Outdoor Center
Paul Smith's Invitational @ Paul Smith's VIC
Divisionals @ Paul Smith's VIC
ECSC Regionals @ Holderness School
USCSA National Championships at Mt. Bachelor, OR



Joining the Team

Reach out to a captain or attend a practice! Practices and races are not required but encouraged. A \$40 Membership fee covers travel and racing costs. The team can help cover the cost of ski camp. All regular-season race weekends are free for everyone! We are lucky to be able to provide gear to all skiers as well.

Join our email list (list-serv) by sending an email to nordic-l-request@cornell.edu with the subject line of "join" and the rest of the email blank. This notification system will address all information relating to the club in the fall while also distributing our training and events schedule throughout the year.





Dartmouth College

General Information

Team Name: Dartmouth Club Nordic

Location: Hanover, NH

Team Size: ~25 racers

Conference: Eastern

Contact: Emily.Anderson.28@dartmouth.edu

LEARN BY DOING: A dancing team with an ice cream eating problem -- From racers to newbies, we all just enjoy getting some time on skinny planks of wood and using our own might to explore nature. Whether you want to learn to classic or skate, race (competitively or in a banana suit) or play in the woods and then eat s'mores, there is something for you!



Team Structure

Dartmouth Club Nordic is entirely student-led, as we are a subclan of the Dartmouth Outing Club, but we also have two awesome college advisors for gear and finances! Participation is totally voluntary (just stay up to date in our GroupMe and join any of our events!). We often provide wax and gear but you are more than welcome to use your own -- we also help members navigate ski-swaps, teach beginner lessons, and run more advanced workouts and longer ski expeditions as well! Free membership, trail access, and access to ski gear are part of our deal!

Notable Mentions

Dartmouth Club Nordic was refounded out of the ashes in 2015 and has grown quickly from a small group of friends to an ice cream-motivated mob of skiers of all skill levels. We love to bring top-tier flair and music to our favorite USCSA collegiate races, throwing down big performances on (and just to the side of) the trails, including Stefano's "I'm on a Roll". We make sure even the most serious of competitors enjoy some mid-race banter just as they are green with jealousy for our speed-enhancing race costumes (banana suits optional).

We have qualified athletes to USCSA Regionals and National Championships every year that there has been interest! Informally we believe we are annual podium contenders for Best Race Swag.

Dartmouth Club Nordic

Practices

We host near-daily winter skis, both morning and afternoon -- usually running two dedicated beginner lessons during the week, and two to four more advanced and free-form ski sessions. More experience skiers offer technique tips and tricks for those interested in dialing in their stride. There is no practice requirement, and we provide free skis/boots/poles for anyone who wants to borrow! In the fall and spring we host beginner rollerski lessons and easy jogs and hikes, and provide a mini training group for those interested in intensity endeavors. We also attend a local rollerski race and hold an intro meeting for interested people. Often we will also try out other fall club sports - soccer, cycling, running, triathlon, frisbee, etc to supplement our dryland preparations!



Trips/Events

Each year we go on a week and a half long "Winterim" training/adventure/frolicking trip in December before the start of the winter term in January. Past destinations have included West Yellowstone, MT (2023) and Lillehammer, Norway (2022). The trip is absolutely not required but it is a super fun way to bond with other nordic enthusiasts! Expenses are partially covered by college support. We also host a Full Moon Ski where we toodle around under the stars and crash into each other despite headlamps, as well as an end-of-season Ski Banquet, where we feast on s'mores and snacks around a campfire after an evening ski! We have also run no-poles handball, capture the flag, and sharks-and-minnows games as well.

Race Schedule

Expected Winter Race Schedule (all are mix of skate and classic, and all are optional!): 2-3 ECSC Invites (Locations TBD - nearby ECSC colleges, Sprints/Relays/5k/10k/15k), ECSC Divisionals (Sprints/Relays/5k/10k/15k), ECSC Regionals (Sprints/Relays/5k/10k/15k), Craftsbury Marathon (Craftsbury, VT, 25k/30k/50k), Oak Hill Silver Fox Trot (Hanover, NH, 6k), Stowe Derby (Stowe, VT, 20k), and USCSA National Championships

Transport, Lodging, and Race fees are provided for and coordinated by the Captains, and total cost per race usually comes out to \$15-40 after college subsidy! ECSC/USCSA are collegiate races, the rest are citizen/open.



Joining the Team

All Dartmouth students are welcome to join! Free membership, free trail access and free usage of our gear, and minimal race fees if you decide to race (total travel/lodging/food/race fees usually are only \$15-40/race after college subsidies!).

Reach out to Emily.Anderson.28@dartmouth.edu, Alden.T.Wilcox.26@dartmouth.edu, Aidan.R.Fillippa.26@dartmouth.edu anytime you like! Also check out the website and instagram for more.



McGill University

General Information

Team Name: McGill Nordic Ski Team

Location: Montreal, Québec, Canada

Team Size: ~15 USCSA racers, ~40 skiers

Conference: Eastern

Contact: mcgillnordicskiteam@gmail.com

The McGill Nordic Ski Team is a club aimed at promoting and facilitating all levels of nordic skiing at McGill.

We're proud to have skiers from many different skiing backgrounds and levels, ranging from those just getting into the sport, to those who train and compete at the university level. We have a storage and waxing space in the McGill gym, and hold practices on the ski trails around Mount Royal. We are united by our love for skiing, and our priority is to make the team as much fun as possible for everyone who joins!



Team Structure

We are a completely student-run club, with experienced members of the team generously giving their time to organise logistics for races and other events. Leadership on the team takes the form of an exec committee, nominated at the end of each season, which is structured:

- President
- VP Internal/External
- VP Finance
- VP Fundraising
- VP Competitive
- VP Social
- VP Alumni

Skiers welcome (some previous skiing experience required)

Notable Mentions

Whether you're an expert or a beginner, hoping to ski competitively, recreationally, or anywhere in between, we've got what you're looking for! Since we are a club team, as opposed to varsity, we have lots of freedom both in terms of how the team is run, and how members can be involved with the team. In addition, since we are a relatively small, completely student-run club, team members have a unique opportunity to be closely involved with the management and direction of the team. This means that anyone who joins the team has a lot of control over their experience with the team, and is able to curate it however they like.

Notable Awards:

- Canadian Triple Ski Challenge
- Canadian Ski Marathon Gold
- Canadian Ski Marathon Bronze

McGill Nordic Ski Team

Practices

We hold 3-5 official team practices each week, which are planned and run by members of the exec committee. Half or more of all practices required. They take place right in the middle of the city on the Mount Royal ski trails, which are a 5 minute walk from the McGill gym where we store our skis and waxing supplies. Practices run from early September until the snow runs out. Most of the Fall semester is devoted to dryland training, consisting of running, ski-bounding, and strength training, as well as our Fun Friday practices. As soon as we have snow on the ground, we start skiing practices, with a mix of technique, distance, and intensity training.



Trips/Events

The team holds three training camps throughout the year, one during the fall semester and two during the winter. These are super fun weekends devoted to skiing (or sometimes trail running in the Fall), bringing the team together, and enjoying the outdoors, and are definitely highlights of the year!

Race Schedule

Typical USA Comp Season Schedule:

January 11-12: USCSA 1 - 5-15km, collegiate race, New England
January 18-19: USCSA 2 - 5-15km, collegiate race, New England
January 25-26: USCSA 3 - 5-15km, collegiate race, New England
February 1-2: USCSA 4 - 5-15km, collegiate race, New England
February 8-9: Canadian Ski Marathon - 20-160km, Loppet, Montebello, QC
February 15-16: Gatineau Worldloppet - 10-50km, loppet, Gatineau, QC



Joining the Team

Recreational team: \$50CAD (access to team room, unlimited waxing supplies, access to team events)

Competitive team: \$500CAD (access to team room, premium waxing supplies, all USCSA regular season races (transportation/lodging/race fees), Canadian loppet races (transportation/lodging), 2/3 annual training camp weekends (transportation, lodging, food, trail passes))

We are not able to offer any scholarships to team members. Financial support for skiing is available from our partner organization, the Redbirds Ski Club, to team members who are competing at events not covered by the team (ex. nationals).



Middlebury College

General Information

Team Name: Middlebury Club Nordic

Location: Middlebury, Vermont

Team Size: 30-50

Conference: Eastern

Contact: skiga@middlebury.edu

Also known as MCN, we are Middlebury's club ski team for new and old skiers alike. We welcome anyone who's interested, whether or not you have any skiing experience. We have rental gear for club members to loan, and would love to teach you how to ski! We offer weekly practices in the fall and winter, and have a competitive race season from January to mid-February. We race in the ECSC (Eastern Collegiate Ski Conference), which is a subgroup of the USCSA (United States Collegiate Ski Association). We also offer opportunities for more social skiing and races, such as citizens biathlon and ski cross.



Team Structure

Our club team is entirely student-led with a men's and women's captain, a treasurer, a race coordinator, a training coordinator, social media and social chairs, a wax tech, and a ski lessons liaison. Students are nominated to these positions by members of the club at the end of each year. All abilities welcome (no previous skiing experience required).

Notable Mentions

Many of our members teach ski lessons at Rikert over J-Term. This is a fun and low key way to give back to the community while also getting a PE credit! We also have members volunteer as mentors for the Stride Foundation each year, which seeks to provide skiing opportunities to disadvantaged elementary school girls.

Established in 2019:

1x All American

Regional Champions

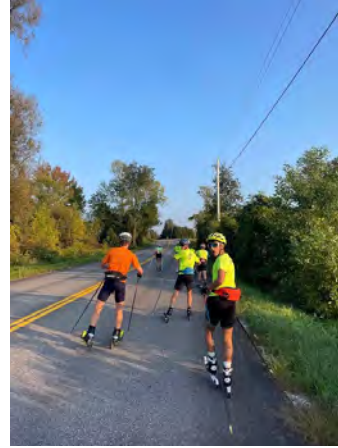
Multiple Junior Nationals Qualifiers

1x World University Games Qualifier

Middlebury Club Nordic

Practices

We host practice three times a week Tuesday-Thursday in the Fall and Winter. We have afternoon practices where we run or rollerski (no prior experience required) in the Fall and ski at the Rikert Nordic Center during JTerm. Practices are led by our captains and are completely optional. An optional training plan is provided each week with the schedule for practice as well as workouts for non-practice days.



Trips/Events

We do not have an organized trip, but members of the club have organized trips in the past to Mont-Sainte-Anne over February break.

Our team typically races the USCSA circuit, although there will be opportunities to race in Eastern Cups and other races for those that are interested. We also will typically attend beginner biathlon races during J-Term which take place during the week in Jericho, VT.

Race Schedule

2025 Race Schedule

12/21/24 - 12/22/24 Craftsbury Eastern Cup - Craftsbury, VT, citizen
1/11/25 - 1/12/25 USCSA - collegiate
1/18/25 - 1/19/25 USCSA - collegiate
1/18/25 - 1/19/25 Lake Placid Eastern Cup - Lake Placid, NY, citizen
1/25/25 - 1/26/25 USCSA - collegiate
2/1/25 - 2/2/25 USCSA - collegiate
2/8/25 - 2/9/25 USCSA - collegiate
2/15/25 - 2/16/25 USCSA - collegiate
2/15/25 - 2/16/25 Rikert Eastern Cup - Ripton, VT, citizen
3/5/25 - 3/11/25 USCSA Nationals - collegiate
3/18/25 Stowe Derby -Stowe, VT, 20k, citizen



Joining the Team

There are no fees required to take part in the team and attend practices but members who wish to race in the USCSA will have to pay for their own USCSA membership (\$20) as well as race fees for citizens/Eastern cup races. We also ask that members who participate in overnight races contribute to housing and food costs. USCSA race fees, wax, and gas are all covered by the club, and skis and other equipment can also be borrowed from the club.



Northeastern University

General Information

Team Name: HUski Nordic

Location: Boston, MA

Team Size: ~25

Conference: Eastern

Contact: huskinordic@gmail.com

HUski Nordic is Northeastern University's first collegiate Nordic skiing club! Created in 2023, this club aims to give all students, from seasoned racers to new skiers, access to skiing in and around Boston. Members practice year-round, training at the nearby Weston Ski Track when there is snow, with opportunities to compete in the USCSA Eastern Conference races from January through March.



Team Structure

Our club is completely student run! The club works with Northeastern's center for student involvement for transportation and funding, has a faculty advisor, and all leadership positions are student filled. All abilities are welcome, no previous skiing experience is required to join. We do not hire a coach, so team members coach each other throughout the season with our student elected training manager organizing practices. Other leadership includes president, treasurer and social media chair.

Notable Mentions

Our team was recently founded because Northeastern did not have a Nordic ski team. Many schools in the Boston area do not have a team. Due to this, our mission is to promote and give more students access to cross country skiing in the Boston area. Our club allows for both competitive skiing and recreational, even to those who have never skied before! Our team has nearly tripled since its establishment in 2023, and in our second year competing in USCSA we sent team members to nationals in Bend, Oregon. We also had six skiers compete in the American Birkebeiner. Back in Boston we got 10 people on skis for the first time at the local Weston Ski Track!

HUski Nordic

Practices

Our practices are held once a week during the school year, and during the ski season we have one dryland practice along with one day at Weston Ski Track for on-snow practice (weather permitting). We also have off season summer practices that consist of dryland and strength training along with rollerskiing around the Boston area, often biking/running to a nearby beach or lake! Practices and races are all voluntary and all abilities are welcome. Weekend hike and rollerski adventures also happen throughout offseason! Gear is available for use for people who don't have skis in Boston, but we encourage people to use their own. Wax is provided!



Trips/Events

The team routinely takes weekend trips to hike and rollerski in the greater New England area. Larger trips have included a trip to Minnesota for the World Cup races and Wisconsin for the American Birkebeiner! These trips are all student lead and are funded for by the individual but organized by our student leadership. There are opportunities as well to have ski weekends during the school year around the East Coast that does not include racing.

Race Schedule

Our races fluctuate depending on what USCSA puts out as its race schedule for the year. Normally, races are every weekend during the winter, with Saturday and Sunday classic and skate races. Our team attends as many races as possible with skiers being able to choose which weekends and races they want to compete in. Race formats range from skiathons to sprint relays to 20k's. Outside of the USCSA race calendar we also send skiers to compete in the American Birkebeiner and Cochran's Nordic Cross!



Joining the Team

All abilities are welcome and racing is not a requirement! Registration expenses for USCSA races are covered and equipment is lended, but transportation and housing for race weekends is self-funded. To join reach out to huskinordic@gmail.com!



Paul Smiths College

General Information

Location: Paul Smiths, NY

Team Size: 20-30

Conference: Eastern

Contact: mdougherty@paulsmiths.edu

Paul Smith's College is the official training center for Sport and Education for both USA Nordic and USA Biathlon. Allowing athletes the opportunity to pursue both sport and education at a world class level. The college's Nordic program provides full support and coaching to athletes in Biathlon, Nordic Combined, Ski Jumping and Nordic. The program competes in the USCSA for Nordic skiing which allows the college to support athletes more holistically in pursuit of their athletic endeavors.



Team Structure

The team has a Varsity team with a Full Time Coach and Two Assistant Coaches, We hire Wax Techs for Nationals to assist and we also work with specific coaches to add depth for technique and strength as needed. Matthew Dougherty is the Director of Nordic Sports; John Thompson is the Assistant Coach.

There is no performance criteria for joining the team, but there are tryouts to be able to race. All practices and races are required.

Notable Mentions

Founded in 1950 and joining the USCSA in 2008, Paul Smith's is a powerhouse team. We've had rapid growth with full support from the institution with a Nordic center on campus with FIS trails and over 45k of skiing right from our dorm rooms.

Some accomplishments include: USCSA National Champions 2022, US Biathlon Team National Champions 2023, both men and women's team have been on the final podium at USCSA Nationals the last four years.

Paul Smiths College

Practices

We run a full program with year round training support, including summer training opportunities, camps, and full time coaching from August till May. Practices are 5-6 days a week.

Joining the Team

There are no annual membership fees. Travel and racing costs are covered by the team.

For Biathletes, there are performance grants available.

Email or call the Head Coach or use [this sign up link](#).

Race Schedule

We compete in the ECSC for a full collegiate season but we also run races on the USSA calendar and US Biathlon schedule racing from November till the end of March.

Trips/Events

We do training camps throughout the world and US.



The graphic features a dark green background with three logos at the top: the United States Biathlon logo, Paul Smith's College logo, and the USA Nordic logo. Below the logos, the text "NORDIC SKI TEAM" is written in large, white, bold letters. The central part of the graphic is a collage of three action shots: a biathlete in a yellow and black striped suit aiming a rifle, a skier in mid-air performing a jump, and a skier in a yellow and black striped suit racing down a slope. At the bottom, the text "JUMP. SHOOT. SKI. All in one place." is displayed in white, followed by "2022 USCSA Men's National Champions, Women's National runner-up" and "The official higher education partner of USA Nordic and United States Biathlon". A QR code is located in the bottom right corner.



Smith College

General Information

Team Name: Smith College Nordic Ski Club

Location: Northampton, MA

Team Size: ~35 with ~20 racers

Conference: Eastern

Contact: nordicskiclub@smith.edu

This organization provides the opportunity for interested Nordic skiers to gather and share stories of trips on the trails, bond while watching World Cup races, and race at a community and collegiate club level (USCSA) while representing Smith College. This club will promote a positive community and love for the outdoors as well as a growth mindset in increasing Nordic skiing participation in our Five College community.



Team Structure

The Smith College Nordic Ski Club is a fully student athlete-led team. We organize all racing arrangements, practices, waxing, equipment supplies, training, housing, and traveling accommodations. There are no experience requirements for being on the racing team, just to start at least two races on the USCSA racing schedule. All abilities are welcome, there is no previous skiing experience required and all practices are optional but highly encouraged. Wax is provided by the team for races.

Notable Mentions

The Smith College Nordic Ski Club was founded in the spring of 2022 and joined the USCSA in Fall 2023. All three skiers who competed at the USCSA 2024 National Championships in Lake Placid, New York were Academic All-Americans and in 2025, two racers qualified for nationals held in Bend, Oregon. The club continues to grow each year, now with a racing roster of about 20 students from the Five Colleges.

Smith College Nordic Ski Club

Practices

Practices are student-led and optional but highly encouraged. The Smith College Nordic Ski Club practices 4-5 times a week during the school year. Winter training is dependent on weather and snow availability, with our home trails being at Notchview in Windsor, MA. Summer training is encouraged but not performed as a team.



Trips/Events

The Smith Nordic Ski Club hosted their first community race, the Skinny Ski Scurry, at Notchview in February of 2025. They plan on continuing to host this fundraising race each year. Additionally, recreational trips to Notchview ski area (~35 minutes from campus) are taken throughout the winter depending on snow coverage and interest.

Race Schedule

The Smith College Nordic Ski Club plans to race at all Eastern Conference USCSA races, as well as most citizen races hosted in Western Massachusetts and Southern Vermont (Notchview and Prospect) in the upcoming winter of 2026.



Joining the Team

Everyone is welcome to join the club, no skiing experience is necessary. There is an annual membership fee of \$20 which covers all registration fees for the year and partial racing costs. Depending on the number of participants, accommodations, additional race fees, and some equipment may also be provided. If interested in joining, reach out to nordicskiclub@smith.edu!



United States Military Academy at West Point

General Information

Team Name: Army West Point Nordic Ski

Location: West Point, NY

Team Size: ~15

Conference: Eastern

Contact: dcainfo@westpoint.edu

The Army West Point Nordic Ski team is committed to cadet development in the areas of fitness, endurance, and determination. Team members carry out that commitment by competing against other college-level ski teams while representing West Point at events held by the Eastern Collegiate Ski Conference of the United States Collegiate Ski and Snowboard Association.



Team Structure

The Army West Point Nordic Ski team is a cadet-led effort club. Managing the membership, practices, and competitions gives cadets the opportunity to hone their leadership skills and enhance their interpersonal and social development and teamwork abilities. The team is a hobby club organized under the Directorate of Cadet Activities and is open to all cadets regardless of class or level of skiing experience. They are supported by volunteer faculty/staff chaperones when traveling. Half of races and practices are required.

Notable Mentions

The Army West Point Nordic Ski team is designated as a "Hobby Club" at West Point, and is one of many extra-curricular activities in which cadets may participate. In keeping with the mission of West Point as a leadership development institution, every cadet on the team has an important role to play. Cadets make all arrangements for practices, competitive events to attend, equipment purchase/maintenance, uniform purchase/upkeep, team facilities management, and travel, thus preparing themselves to be competent leaders for their future Army careers.

During the 2024 season, two skiers qualified for the USCSA National Championships, and both earned Academic All-American. Last year in 2025, our skiers qualified for the USCSA National Championships, and several earned the status of Academic All-American!

Army West Point Nordic Ski

Practices

Cadet life is busy! Priority is given to academics and military training overall, with club activities like Nordic Ski rounding out a cadet's physical pursuits. Practices take place at irregular intervals during the semester, and consist of roller-skiing practice and cardio/running during designated Club meeting hours (generally Tuesday nights after dinner). Half of practices are required.



Trips/Events

During each season, the West Point Nordic Ski Team arranges a trip to Camp Ethan Allan, VT, to train with the Coordinator for the Vermont National Guard Biathlon team. In 2023 the National Guard Biathlon Championships were held at Camp Ethan Allen, and the cadets all had the chance to observe the competitors skiing, racing and firing rifles during the competition. All the cadets gathered with the coach of the Wyoming National Guard team for some shooting tips and experience. The biathlon teams from across the country were welcoming and supportive of the cadets, and we spoke with many Guardsmen from Michigan, Colorado, Wisconsin, and Montana about skiing, shooting, and Army service. The cadets greatly benefited from the interaction with the nation guard teams.

Race Schedule

During a typical season, the Army West Point Nordic Ski team competes at 4-5 Eastern Collegiate Ski Conference events in NY, VT, NH, and ME. Some of our most recent seasons included races or ski training across the Northeast, including:

Lake Placid NY, USCSA Race
Ethan Allen Training Center, VT National Guard, Jericho VT
Paul Smiths NY, USCSA Race
ECSC Divisionals, Jackson NH, USCSA Race
ECSC Regionals, Paul Smiths NY, USCSA Race
Local Rail trail rollerski trip, training
USCSA National Championships, Bend OR



Joining the Team

Individual skiers register for the season with USCSA; all travel and race fees for events during the season are paid out of the team budget. Cadets receive a meal allowance for meals they miss while on event trips. There are generally no out-of-pocket expenses for cadets during event trips, with the possible exception of a \$15.00 transportation fee if the designated portion of the team's budget cannot cover that cost. Team members are able to raise funds to cover transportation fees by staffing the concession booths at Army sports events. Prospective skiers should reach out to dcainfo@westpoint.edu!



University of Maine Farmington

General Information

Team Name: UMF Nordic

Location: Farmington, ME

Team Size: ~3

Conference: Eastern

Contact: merit.bean@maine.edu

UMF provides students with meaningful and positive experiences that are integral to their holistic education through participation in varsity athletics. We welcome skiers of all abilities and focus on having fun, improving technique and helping each skier reach their individual and team goals.



Team Structure

We are a fully-funded Varsity team that enjoys great support from our Snowsports Director and Athletic Director. We are coached full time by Buzz and Sally Bean who have coached for 40 years. All waxing is done by the coaches who LOVE waxing, especially klister! Buzz Bean, in his 5th year at UMF, is joined by Sally Bean, who assists in all aspects of the team and is the team chef as well as wax tester. Ski experience is not required, as well as all races. All practices are tailored around academic schedules but are essential to success. Team size has varied from year to year based on interest.

Notable Mentions

Ayla Bodach-Turner was selected to represent the USA at the FISU World University Games in Torino, Italy in January. It was an amazing opportunity to compete against other racers with International experience. She was the 4th US Female in both the FS Sprint Qualifier and the 10km FS.

The Beavers placed 3rd in the Eastern Regionals to qualify for the USCSA Nationals in Bend, Oregon. They were led by Ayla Bodach-Turner who was First for the USCSA athletes, followed by Cora Treiss in 8th and First Year skier Kelsey McCrum in 24th.

UMF has a strong tradition of top 15 performances at the USCSA Nationals and most team members are Academic All Americans as well. They placed 9th at Nationals in the 15km Classic, 11th in the Sprint and 9th in the 7.5km Freestyle race.

We look forward to hosting our first USCSA race at Titcomb this winter!

UMF Nordic

Practices

Practices are tailored around academic schedules but are essential to success. We begin roller skiing two days a week in early fall, based around academic schedules. Athletes train 3-4 other days on their own. We have a 3 day training camp down east on the coast of Maine where we roller ski, hike, bike and eat lobsters and clams! Once snow arrives we ski daily at Quarry Road, Titcomb Mountain (5 minutes from campus with lights) and the Sugarloaf Outdoor Center. We have the most reliable snow in the East! Athletes train all through the summer individually.



Trips/Events

We often have fun at Sugarloaf practicing fast GS type turns on the Alpine trails. We enjoy skiing on non-traditional Nordic trails and have a lot of fun team dinners after skiing at the coach's trails at their home.

Race Schedule

We do local NENSA Eastern Cup races in the early season as well as the Bates or Colby NCAA D1 Carnivals. We travel to New Hampshire, Vermont, and New York for USCSA races 5 weekends a year and race everything from sprints to 15KM. We travel in team vans (with great music!) and stay in rental homes where we eat delicious meals tailored to individual needs. We also travel to the USCSA National Championships every year.



Joining the Team

There are no membership fees. The team is fully funded and the college pays for all race fees, waxes, travel, and other expenses. Athletes only provide their equipment. Athletes may contact Buzz Bean at Merit.bean@maine.edu as well as by phone at 207-331-6233 if they are interested in joining!



University of Vermont

General Information

Team Name: UVM Club Nordic
Location: Burlington, VT
Team Size: More than 60 with ~50 racers
Conference: Eastern
Contact: uvmnsc@gmail.com

The UVM Nordic Ski Club strives to provide inclusive, accessible, and affordable nordic skiing opportunities to students at the University of Vermont. We offer all levels of fun and competition (although who would want less fun?), and pride ourselves in being one of the few fully student run teams within the USCSA, as well as one of the largest (and most fun.)



Team Structure

UVMNSC is a ski club completely run by students. These elected members handle everything from finances, to accommodations during race weekends, to practice plans, to making sure the only thing anyone else has to worry about is having fun. We also have an alumni who acts as a coach to newer skiers, a wax tech, and a general “hype-machine”. All practices and races are optional, and all abilities are welcome!

Notable Mentions

UVMNSC is a huge part of the ski community in the Eastern conference. In just the last 5 years, we have grown from ~15 active racers to over 50. We pride ourselves in being the loudest, arguably the most fun, and still competing at the top. Our student leaders work to organize fundraising events across the Burlington area in order to fund our season. In the fall, we work with local families to help with their yard-work, garden clean-up, and other various tasks. We give to the community, and the community gives back (sometimes with bonus brownies)!!

University of Vermont Nordic Ski Club

Practices

Practices are optional, but participation is encouraged! We hold chill evening runs in the fall, and start bringing members to ski at our very own Sleepy Hollow Ski Center, 3 days a week, an hour and a half each night, as the winter ramps up. Our officers work to create a training plan for members who are interested in being more competitive to follow.



Trips/Events

We have a winter ski camp! The past three years, we spend the last week of winter break in Mont Sainte Anne (2023, 2025) and Mont Tremblant (2024) having lots of fun, lots of skiing (with optional training), and lots of team bonding.

Each year UVMNSC hosts a home race at Sleepy Hollow!

During the fall the team goes on hikes, trail runs, and other bonding activities to get us outside and spending time together.

Race Schedule

A typical season begins the first weekend back from winter break, mid January. We will often travel on Friday night, or early Saturday morning, and travel back to Burlington by Sunday evening. These weekends are fabulous, fun, and full of good memories.

The season is 5 consecutive weekends of 2 day races, with a week of USCSA Nationals racing capping off the season at the beginning of March. All races are optional, but those wishing to be considered for the Nationals team must compete in 2 race weekends.

Races range from 1.5k to 15k. Each weekend consists of 1 skate race, and 1 classic race.



Joining the Team

As already stated, there is no ski experience requirement. To join, members have to pay registration dues. The \$100 dues in the fall covers race housing, food, race registration, USCSA registration, practice ski passes, and van transportation. There is a separate fee for ski camp which covers nearly the whole trip. Membership fees cover all travel and racing costs. Those interested in joining the team should reach out to uvmnsc@gmail.com!!



Wellesley College

General Information

Team Name: Wellesley Nordic Ski Team

Location: Wellesley, MA

Team Size: ~20

Conference: Eastern

Contact: ka106@wellesley.edu

The Wellesley Nordic Ski Team provides a space for members of the Wellesley community to learn, enjoy, and compete cross country skiing. Our team is centered around creating a welcoming space for everyone to have fun on the snow and off, and our student run club leadership is an excellent space to grow valuable skills.



Team Structure

We have a coach who leads practices and attends races. However, all organizational work is handled by our student 'eboard' made up of around 7 or 8 members. This includes finances, race and event planning, and waxing/ equipment work. Leadership positions generally include president(s), treasurers, race coordinators, a gear officer, social chairs, and any other fun position that makes the team a better place!

Notable Mentions

Our team was founded around 15 years ago (by Olympic biathlete Clare Egan!) and has had some variations over the years, with an increase in size the past couple of years to our current roster. Last year some members attended nationals in Bend, OR.

Wellesley College

Practices

We generally have three practices a week in the winter that are run by our coach. We ski at the Weston ski track when it is snowy (and when it isn't and they make snow :)), and in the fall we have fun dryland practices 3 days a week which are run by students.



Trips/Events

In the past we have done team training trips to other places in New England. Last year this was a weekend trip to Middlebury, VT, and we hope to have similar trips in upcoming seasons!

Race Schedule

2025 Race Schedule:

Feb 1-2 - Paul Smith's VIC, Paul Smith's NY
Feb 8-9 - Craftsbury Outdoor Center, Craftsbury VT
Feb 15-16 - Regionals @ Holderness School, Holderness NH
Feb 22- Smith Skinny Ski Scurry!
Mar 10-15 - Nationals @ Mt Bachelor, Bend OR



Joining the Team

2 practices a week in the winter is recommended, and 1 practice per week in the fall is required. Costs are fully covered by Wellesley. Races are completely optional, but are great opportunities to ski in new places and bond with team members! Prospective skiers are welcome to reach out on Instagram, or alternatively email ka106@wellesley.edu.

Midwest Region

Midwest Collegiate Ski Association (MCSA)



By Luke Dykowski

The Midwest is the heartland of U.S. Nordic skiing, and the Midwest Collegiate Ski Association (MCSA) embraces its dynamism and community spirit. From the shores of Lake Superior to the American Birkebeiner's Main Street finish-line, MCSA athletes represent their teams at the largest Nordic ski races on the continent and at close-knit, intercollegiate events. Their schools include the flagship universities of Wisconsin, Minnesota, and Michigan, as well as private colleges nestled throughout the region's dense forests and rolling hills.

The MCSA's schedule is dominated by citizen ski marathons. While individual teams may compete in a wider selection of competitions, the MCSA's Midwest Collegiate Cup includes four weekends of races, all longer than 20k, and culminating with the Birkie—the most popular race in the Western Hemisphere. This unique format allows teams to represent their universities on an international stage, while building lifelong connections with race hosts, volunteers, and their fellow competitors.

The MCSA Regional Championships include two days of racing in Rhinelander, Wisconsin. These are the only college-only races of the season, and qualify up to five Men's Teams and five Women's Teams (as well as high-scoring individuals) for the USCSA National Championships. The MCSA Regional Championship races range from Sprint distance to 15k.



The MCSA also stands out as the only Nordic region governed entirely by its athletes. All but one of the MCSA's Nordic programs are student-led. Student directors make financial decisions, organize travel, and coach practices for their teams, and collaborate with one another to set schedules and make rules for the MCSA as a whole. This crucible of cooperation cultivates lifelong leadership skills, and gets real racing results. Founded in 2019, MCSA Nordic concluded the 2023-24 season with record National Championships results—boasting no fewer than ten All-American finishers in each day of racing, six Individual and seven Team single-day podiums, and two Individual and Team overall podiums. In scarcely longer than the time it takes an athlete to graduate, the MCSA has become an energetic artery pumping dozens of new teams and hundreds of new competitors into the USCSA.

MCSA Website:

<https://www.skimcsa.com/nordic>

Contact:

Luke Dykowski: MCSA Nordic Coordinator

lukedykowski@gmail.com

Emma Reineke: MCSA Nordic Commissioner

reine368@umn.edu

Kenna Karel: MCSA Nordic Student Coordinator & Midwest Nordic Assembly President

karel097@d.umn.edu





Carleton College

General Information

Team Name: Carleton Nordic
Location: Northfield, MN
Team Size: ~20 racers
Conference: Midwest
Contact: davisk2@carleton.edu

In the Carleton Nordic Skiing club team, skiers find an incredibly warm, kind, determined, enthusiastic, and overall vibrant team culture and family-like community excited to welcome anyone interested in skiing, whether they grew up on skis, or have never seen snow in their life! The club team offers year round training opportunities, competition opportunities, and fun times and adventures as a team both on and off the snow.



Team Structure

Carleton Nordic is a club team broken down into 3 sub-groups: The Race Team, Club Team, and PE Classes. All groups are open to skiers of all levels, and are led and organized by a group of 8 enthusiastic and passionate student officers and captains, as well as an incredible part time coach. The captains organize and lead practices, competitions, and team events throughout the year, with the coach leading a couple practices a week during the winter, helping with waxing skis, and hosting the team for dinners and bonfires, helping to build the team's sense of community.

The Race Team provides skiers the opportunity for a team culture more enthusiastic and dedicated towards competing and training in and out of season. The Club Team offers a space for skiers to share a love of skiing with more casual, lower-stakes practices and optional silly races. The PE classes are offered in the winter to teach Carleton students introductory level Nordic Skiing, taught by Carleton skiers and the coach.

Notable Mentions

Carleton Nordic existed as a varsity team between 1939 and 2002. In 2002, the club team was established, and in 2021 we joined the USCSA. Being a new(er) racing team, the team has been growing rapidly in the past few years. With now having a coach and more dedicated and enthusiastic skiers and captains, the race team has been doing better and better every year and is becoming more competitive within the Midwest; last season, the Women's Race Team placed 3rd in the MCSA 2025 Collegiate Cup!

Carleton Nordic also enjoys collaborating with other local ski teams including St. Olaf College and the University of Minnesota Twin Cities with combined practices, or team dinners and events.

In addition to the growing race team, the club team is still quite excited to welcome all those interested in just having a grand ol' time on skis - whether as a seasoned skier or wanting to learn without competition.

Carleton College Nordic Ski Team

Practices

Optional practices occur all throughout the academic year. During the winter, half or more of all practices are required for PE credit, and the race team hosts four to five official practices a week, skiing on the groomed trails in Carleton's arboretum:

- 2 coached workouts
- 2 captain-led ski practices
- Fun Friday - a day to play games and be silly on skis of course!
- 1 lift session

Off season training is a bit more variable but includes one to three practices a week of roller skiing, runs, lifts or whatever fun adventures are schemed up!



Trips/Events

Recent team adventures include going to watch the 2024 World Cup races in Minneapolis, early morning adventures to ski on nice trails in Minneapolis or St. Paul, as well as a ski team retreat up on Lake Superior at the end of the season last year, providing endless opportunities to ski and have fun together off campus!

Depending on the amount of snow, Carleton Nordic also holds their own races, including a fun and silly costume relay race with the local high school team!

Race Schedule

All races are optional but encouraged -- it's a fun time!

In a typical season, our team attends about 4-5 races in the midwest including:

- Mt Ashwabay Skiathlon in Bayfield, WI | 30 km skiathlon | Collegiate and Citizens
- Vasaloppet in Mora, MN | 34 km or 52 km skate | Collegiate and Citizens
- MSCA Regionals (location TBD) | A weekend of collegiate racing -- one sprint, and one 10 km
- American Birkebeiner in Hayward, WI | 50 km skate or classic | Collegiate and Citizens
- USCSA Nationals (Location TBD) | Collegiate

Some years we will also attend the Noquemanon Ski Marathon in Michigan.



Joining the Team

There is no ski experience requirement to join and no team fee, just excitement and enthusiasm to ski and have fun together! Fees do exist for those interested in racing (as races cost money), however there are scholarships to help students pay fees if needed. The club and Carleton's recreational center also has equipment that can be rented/borrowed for anyone without equipment wanting to ski.

Prospective athletes should feel free to reach out to the current club president, Katie, at davisk2@carleton.edu. She would love to talk with anyone about the team and skiing!



College of Saint Benedict and Saint John's University

General Information

Team Name: CSB/SJU Nordic Ski Team

Location: Colledgeville, MN

Team Size: ~15

Conference: Midwest

Contact: Nordic@csbsju.edu

The club strives to promote Nordic skiing and foster a competitive athletic spirit amongst members. Head coach Ion Senchea provides training plans for skiing, core, weights and any other winter or summer areas of focus. Those plans are tailored toward an athlete's reasons for being part of the team and helping them achieve their individual goals.



Team Structure

Our team has a full time coach who meets for practice 4 days a week. He provides technique coaching, as well as a training plan. We also have multiple student captains that help lead, facilitate, and plan practices. They also host captains practices in the fall. The coach is Ion Senchea.

All abilities welcome (no previous skiing experience required)

Half of practices required

Notable Mentions

Having joined the USCSA in 2024, CSB/SJU Nordic is completely free to members and is new to the USCSA and MESA.

CSB/SJU Nordic Ski Team

Practices

Our practices are formally coached and take place in the Saint John's Arboretum, which has over 20km of groomed classic and skate trails. Practices are 4 days a week Monday through Thursday, with Friday being an optional captains practice with a fun activity. We have some off season training in the form of captains practices starting early November.



Trips/Events

We have gone to Giants Ridge and Yellowstone in past years (Giants Ridge last year). Also, in past years we have hosted the Langlauf ski race at the Saint John's arboretum trails.

Race Schedule

- Michigan Tech Pre-Nationals CXC Cup (5k/10k distance race, sprint race) (collegiate)
- Half-Noquemanon Ski Marathon (24k classic and skate)(collegiate)
- Mt. Ashwabay Ski Race (25k skiathlon)(collegiate)
- Pre-Birkie (42k or 26k, classic or skate)(citizen)
- American Birkebeiner (50k skate, 55k classic)(citizen)



Joining the Team

There is no annual team membership fee. Ski equipment is mostly provided by individuals, though we have some available for new skiers. Travel and racing costs are covered for members.



St. Olaf College

General Information

Team Name: St. Olaf Nordic Ski Team

Location: Northfield, Minnesota

Team Size: 22-24

Conference: Midwest

Contact: hanson27@stolaf.edu

The St. Olaf Nordic Ski Team challenges athletes to refine their technique, knowledge, and passion for the sport, fostering a lifelong dedication under the guidance of coaches and fellow teammates.



Team Structure

St. Olaf is supported by a head coach and an assistant coach(es). The coaches are supported by 2-4 captains for both men's and women's. During race weekends, athlete parents often graciously volunteer their time and support. The coaches and occasional parent or captain are responsible for waxing and testing for the race weekends.

Notable Mentions

We are a youthful team with many up-and-coming athletes who are enthusiastic about making an impact in the ski world as well as their local community. Via member involvement from supporting each other on race weekends to community support events, facilitated by the team's Athletic Advisory Board liaisons, our athletes leverage their abilities to improve their environment. Some of our recent awards include:

- Women's 2022-2025 National Champions and President's Award
- Men's 2nd 2020, 5th 2024, and 3rd 2025 at Nationals

St. Olaf Nordic Ski Team

Practices

Practices are in the afternoons Monday-Friday from 3:30-5:30 with occasional morning practices/lifts before 8 am classes. We also have 2 guided lifts a week. Saturday practices are typically 8:30 am-11:30 am.



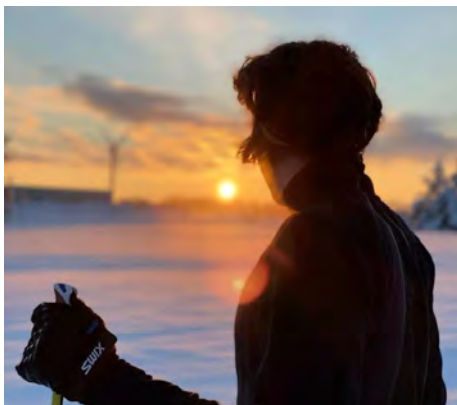
Trips/Events

The athletes organize a yearly Thanksgiving trip either out west around Yellowstone or east to Michigan. This is an athlete-funded trip where they cook, organize workouts, and transport themselves. Participation is not required by any means but athletes always have a blast!

Race Schedule

2025-2026 Proposed Schedule

- Dec 13-14: Duluth Super JQ and MN Ski Opener
- Dec 20-21: Cable Super JQ
- Jan 4-9: Senior Nationals - college
- Jan 24: Ishpeming - Noque Ski Marathon - college/citizen
- Jan 31: Mt Ashwaybay Skiathalon - college
- Feb 7: Mora Vasaloppet - college/citizen
- Feb 14-15: MCSA regionals and Wirth Super JQ
- Mar 9-14: USCSA Nationals



Joining the Team

Joining the team is free but you must purchase your licenses if on the racing team and maintain your own equipment. The membership fees cover travel and racing costs. There are no performance criteria for joining the team, but there are 'try outs' to race. If you're interested, reach out to hanson27@stolaf.edu (preferably by the fall of senior year in high school).



Michigan Technological University

General Information

Team Name: Michigan Tech Nordic Ski Club
Location: Houghton, MI
Team Size: 40-50 members with 10-15 racers
Conference: Midwest
Contact: hjzoll@mtu.edu

The Michigan Tech Nordic Ski Club's mission is to promote a cross-country skiing community at Michigan Technological University



Team Structure

The MTU ski club is entirely student-led. As a student organization at MTU, there are club officers as well as a faculty advisor. There is no skiing experience required to join, and all practices and races are optional. There are around forty to fifty members of the club each year, and a racing USCSA team of ten to fifteen.

Notable Mentions

Our club is relatively small; despite this, our men's team has placed 4th and 5th overall in the MCSA in recent years. We are a small team, but MTU has many talented club skiers who are competitive in the MCSA. The club team joined the USCSA with the establishment of MCSA Nordic in 2019. One of the most important characteristics of club skiing at MTU is the ease of access to the Tech Trials, a world-class competition trail system just up the hill from campus. The ski club has a room for waxing and ski storage at the trailhead.

MTU Nordic Ski Club

Practices

The club has a group ski once a week in the winter and a weekly training run or roller ski in the fall. Usually we meet on Tuesday or Thursday evenings at the tech trails. There is no coach, so practices are organized by the club. All practices are completely optional and fun to attend!!



Trips/Events

The MTU Nordic Ski Club has a yearly training trip on MLK weekend in January. The club typically travels to Cable, Wisconsin, or Ironwood, Michigan, for a long weekend of skiing. The club has also historically done trips on Thanksgiving weekend to find early-season snow.

Race Schedule

All races are completely optional!

2025 Race Calendar:

Noquemanon Ski Marathon, 24k, Collegiate
Mount Ashwabay Summit Ski Race - Skiathlon, Collegiate
MCSA Regionals, Collegiate
The American Birkebeiner 50k, Collegiate
Great Bear Chase, Calumet, MI Citizens



Joining the Team

There is a \$20 season club due for using the wax room which is stocked with tools and wax, and can be used to store equipment at the trailhead. All trips, races and practices are optional. Expenses not funded by the University, like food when on trips, are split between attending members. The University pays for travel expenses like gas and lodging, as well as some race fees in smaller collegiate races. Prospective skiers should reach out to hjzoll@mtu.edu!



St. Mary's University of Minnesota

General Information

Team Name: St. Mary's University Club Nordic

Location: Winona, MN

Team Size: ~15

Conference: Midwest

Contact: nfuller@smumn.edu

The Saint Mary's Nordic Ski club provides a co-ed competitive and casual learning and practicing opportunity for students.



Team Structure

St. Mary's University Club Nordic is a club team at the school. Coach Noah Fuller is the team's full-time coach, providing technique, training, wax support, and everything in between! This is offered year-round to participating students, regardless of competitive participation. The day-to-day of the team is run by the club's multiple student officers who apply for funding, plan trips, and handle general logistics.

All abilities welcome (no previous skiing experience required), and all races are optional.

Notable Mentions

St. Mary's University Club Nordic is newer to the USCSA and is excited to grow. While we don't have a rich history of racing, the club is 100% free for members, with very basic equipment loaned out to first-time skiers. Travel, lodging, food, and a good portion of race fees are paid for by the university. Because of our small size, all coaching benefits year round for any level including weight room and training programming support are available to all members regardless of attendance.

Team Name

Practices

All practices are optional! Practices are 4 days a week Mon-Thurs, 4:30-6:00pm from Fall thru Spring. Summer off-season training is optional but available, with all practices being totally optional.

Practices are held on the Saint Mary's trail system, with 16.5km of groomed trail (6.5km of which is lit) located directly on campus in the Winona driftless region bluffs. We host out of our dedicated Nordic Chalet in the basement of Yon's dorm hall.



Trips/Events

We take an annual training trip out to West Yellowstone over Thanksgiving break and host the Saint Mary's Club race on our home trails.

Race Schedule

The club schedule fluctuates by student interest, typically aiming for the bigger citizen races like the Birkebeiner and Noquemanon, both larger citizen races with distances ranging from 24k to 55k, either skate or classic. All races are optional.



Joining the Team

To join the team, reach out to Coach Noah Fuller at nfuller@smumn.edu! All abilities are welcome and there are no requirements to attend practices and races. No fees at all besides a small gas fee to get us to Yellowstone and a potential portion of the cost to sign up for a race.



University of Minnesota Duluth (UMD)

General Information

Team Name: UMD Nordic Ski Club

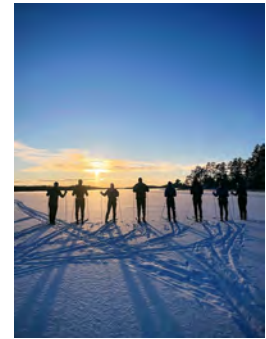
Location: Duluth, MN

Team Size: ~30 with around 15-25 coming to races

Conference: Midwest

Contact: nordicskiclub@d.umn.edu

Our mission is to create a network of cross-country skiers that strive to share the passion of our sport both on campus as well as throughout the Duluth community. We aim to create a fun-loving community for all levels of Nordic skiers who can ski together and enjoy themselves. Specific goals can range from having a fun year practicing, to completing a longer race, to competing competitively at the local or even national level!



Team Structure

Our team is part of the MCSA (Midwest Collegiate Ski Association) and all races and practices are optional. We are part of the Recreational Sports and Outdoor Program at UMD. Our club is 100% student led and does not currently have any official coaches. Anyone can be an officer if they want to be involved, and the main positions are president, vice president, secretary, and treasurer. Transportation and lodging (with the exception of the ironwood trip) for races is covered by the club but race entry fees are covered by each skier.

Notable Mentions

The UMD Nordic Ski Club started in the mid 1990's after the NCAA ski team was cut. This team went on to nationals multiple times in the 90's. There were some ups and downs through the 2000's and more recently in 2018 the team was a founding member of the Nordic skiing portion of the Midwest Collegiate Ski Association (MCSA) which is part of USCSA. Over the past few years our men's team has won 3 collegiate cups and our women's team has consistently been in the top 5 both for the collegiate cup and at regionals. This past year we went to USCSA Nationals and garnered a few individual all American finishes!

UMD Nordic Ski Club

Practices

All practices are optional for our club. Usually we start a few weeks into September with one day a week roller skiing and one day a week of weight room time. Then, once the snow flies we typically practice 3 times a week (except when we have to leave for a race on a Friday when practice would normally be). The practices are chill with some people doing the suggested workout and some just skiing around.



Trips/Events

Our main trip of the year (other than USCSA Nationals) is the Ironwood/Sisu Ski Fest trip. At the end of our winter break we go to Ironwood for an extended weekend skiing at ABR, Wolverine, hanging out, and racing the Sisu Ski Fest.

Other main events besides racing and practices are different volunteering opportunities at local running, rollerblading, and skiing races in the Duluth area.

Race Schedule

Ironwood Trip and Sisu Ski Fest | 15k or 29k | citizen race in Ironwood, MI
Half Noquemanon | 24k Skate or Classic | Marquette, MI
Mt. Ashwabay | 30k Skiathlon | Bayfield, WI
Vasaloppet | 48k or 34k Skate | Mora, MN
MCSA Regional Championships | Various | Rhinelander, WI
American Birkebeiner | 50k Skate or Classic | Hayward, WI
USCSA National Championships



Joining the Team

Any student at UMD is welcome to join! The membership fee is currently \$120 and the club covers hotel costs and gas to each event. Skiers have to pay for the races themselves (and the Ironwood trip has a fee attached to it in addition to the race). To join the team just join the email list and come to any meeting or just show up to a practice and introduce yourself. A good place for more info is our website here:
sites.google.com/d.umn.edu/umdnordicskiclub/home





University of Minnesota - Twin Cities

General Information

Team Name: Minnesota Nordic

Location: Minneapolis, MN

Team Size: More than 100 with ~50 racers

Conference: Midwest

Contact: nordic@umn.edu

The Minnesota Nordic Ski Club strives to provide University of Minnesota students with a convenient and inexpensive opportunity to pursue cross-country skiing both competitively and recreationally.

Whether you've skied your whole life or are wanting to start skiing, there is a place for you with Minnesota Nordic.



Team Structure

Minnesota Nordic is fully run by an awesome officer board of around 14 students. These students handle everything on the team from finances and traveling to coaching and cooking. While Minnesota Nordic does not have a designated coach, we have two officers who design plans for anyone interested in a training plan. They also run weekly practices during both snow season and the off season. For races, the team provides wax and guidance on applying wax, but most skiers do their own wax. There is no requirement for attending practices and races, but participation is encouraged because of how much fun skiing is! The one requirement to join Minnesota Nordic and participate in travel and lodging is to pay the Student Services Fee, which is a required fee for full-time students. This fee is where the team's funding comes from, and can only be used by members who pay the fee.

Notable Mentions

Minnesota Nordic has existed as a ski club at the University of Minnesota since at least the 1970s, and joined the USCSA when MCSA Nordic was created in 2019. Minnesota Nordic has been the driving force in scheduling, governance discussions, and more within the Midwest region. We have had some of the largest participation numbers in the nation for a number of years.

The Women's team has won the MCSA Collegiate Cup three out of the six seasons the MCSA has existed, and taken second place twice. The Men's team has won the Cup twice in those six years, and taken second twice as well.

Nationally, nearly all of our athletes at the USCSA National Championships have been Academic All-Americans, and we have proudly had individuals make All-American in numerous races. In the past two seasons, our Women's team has taken home fourth (2023) and fifth (2024) place in the USCSA.

Minnesota Nordic

Practices

We coordinate carpool transportation for our members to Theodore Wirth Park from 3:00-5:00 pm and 6:00-8:00 pm Monday through Thursday. The team also hosts an organized workout practice on Tuesday nights during our 6:00-8:00 practice time. Practices are optional but encouraged for all members as vehicle space allows. We host offseason training practices in the fall semester including swimming, rollerskiing, and our infamous Frisbee Friday!



Trips/Events

Every year, the team takes a weeklong training trip to the American Birkebeiner Trailhead in Cable, WI before the start of the spring semester. Additionally, the team goes on camping trips and participates in school events during the offseason.

Race Schedule

2025 Season Calendar

Half Noquemanon | 24k Skate or Classic | Marquette, MI
Mt. Ashwabay | 30k Skiathlon | Bayfield, WI
Vasaloppet | 48k or 34k Skate | Mora, MN
MCSA Regional Championships | Various | Rhinelander, WI
American Birkebeiner | 50k Skate or Classic | Hayward, WI
USCSA National Championships

All races are optional! Transportation and lodging is organized and provided by the team. The Noquemanon, Mt. Ashwabay, Vasaloppet, and American Birkebeiner are all citizen races the team competes in, while Regionals and Nationals are college-only races.



Joining the Team

Any student or faculty of the University of Minnesota is welcome to join Minnesota Nordic! Individual dues are \$55, and this includes a season pass to Theodore Wirth Park and access to all practices. To travel and race with the team, members pay a small traveling fee per race to cover gas (\$10-40).

To get in touch with a team leader, reach out to nordic@umn.edu. You can also visit our website or socials to learn more!



University of Notre Dame

General Information

Team Name: Nordic Ski Club of Notre Dame
Location: South Bend, Indiana
Team Size: ~20
Conference: Midwest
Contact: xcski@nd.edu

Notre Dame's Nordic Skiing Club strives to expose students to the sport of Nordic skiing in an initially non-competitive, educational environment giving adventurous high school athletes the opportunity to invest themselves in a beneficial extracurricular. The overall goal of the club is to form an athletic team that can compete with other colleges in the Midwest to eventually become a successful, competitive club. We welcome and provide opportunities for those who raced at a high level in High School and those looking to learn a life-long sport!



Team Structure

Notre Dame Nordic is a fully student-led club team with a President, Vice President and Treasurer.

All abilities welcome (no previous skiing experience required), and all races are optional.

Notable Mentions

We are a club that offers opportunities to both high schoolers who raced at a high level and those who have not skied before! While our team may be small, we put up some competitive skiers at the Regional level in the MCSA.

Notre Dame Nordic

Practices

Weekend practices at local park when snow availability allows, only during season. All practices are optional.



Trips/Events

The team provides lodging and reimbursements for race weekends.

Race Schedule

Noque full and half distance Citizen/Collegiate
Vasa Ski Race in Traverse City 27k, 12k, and 6k
Citizen
Birkie full and Korte distance Citizen/Collegiate



Joining the Team

There is an \$85 racing fee which includes full transportation, meals, race fees, and lodging during weekend races.

There is a \$10 non-racing fees which includes transportation to the local ski area. Membership fees cover travel and racing costs



University of Wisconsin - Eau Claire

General Information

Team Name: Blugold Nordic

Location: Eau Claire, WI

Team Size: 10-15

Conference: Midwest

Contact: robertce3359@uwec.edu

The UWEC Cross Country Ski Team provides opportunities for university students to pick up a new sport or continue their development through organized team practice and competition. The team seeks to teach technique and develop endurance to those interested, regardless of their personal experience levels. They practice multiple times a week and travel to citizen's races most weekends from mid-December to late February.



Team Structure

The Blugold Club Nordic Ski Team is a student run organization that is led by an executive officer board of 5 students. These board members coordinate practices, races, waxing, fundraisers, and more! Team members are encouraged to speak up and share creative ideas on how to make each season the best one yet! Although Blugold Nordic does not have an official coach, the officer board members work to create an effective practice schedule for optimal ski training. Additionally, the team provides wax and help with applying wax. All practices and racing is optional, but encouraged.

All abilities welcome (no previous skiing experience required)

Notable Mentions

Joining the USCSA in 2022, Blugold Nordic is very involved in the community of Eau Claire. Many of our members volunteer coach with a youth ski program in Eau Claire throughout the ski season. We also volunteer in local events such as "The Amazing Eau Claire Cleanup" and the Eau Claire Marathon!

As a small team, we are proud of our Women's team placing in the top 5 teams of MCSA regionals in the past 2 years. We hope to continue our team growth!

Blugold Nordic

Practices

Practices are informal, but goal focused! During the winter, practice is held at various county parks in Eau Claire 3-4 days a week in the evenings. Students are able to carpool for these practices. Outside of the ski season, cross-training practices such as running, rollerskiing, and lifting are held 1-2 times per week. The team also strives to incorporate fun activities into the practice schedule. Some previous team bonding activities include pasta dinners, game nights, bouldering, group fitness classes, and volunteering!



Trips/Events

Over winter break our team takes a training trip to Ironwood, Michigan to ski the beautiful ABR and Wolverine trails of the UP! Typically, this trip is 4-5 days long and filled with lots of skiing and team bonding.

Additionally, the team hosts the Tower Ridge 10K Race annually in late January. This race is open to citizens and students and is a great community event and fundraiser for the club.

Race Schedule

Half Noquemanon | 24k Skate or Classic | Marquette, MI
Mt. Ashwabay | 30k Skiathlon | Bayfield, WI
Vasaloppet | 48k or 34k Skate | Mora, MN
MCSA Regional Championships | Various | Rhinelander, WI
American Birkebeiner | 50k Skate or Classic | Hayward, WI
USCSA National Championships

All races are optional! Transportation and lodging is organized and provided by the team. The Noquemanon, Mt. Ashwabay, Vasaloppet, and American Birkebeiner are all citizen races the team competes in, while Regionals and Nationals are college-only races.



Joining the Team

Team membership fees are \$20. This covers practices, waxing supplies, transportation, and lodging for races. Members must pay for their own race registration costs.



University of Wisconsin - Madison

General Information

Team Name: Wisconsin Nordic

Location: Madison, WI

Team Size: ~70 members

Conference: Midwest

Contact: uwnordic@gmail.com

Wisconsin Nordic is a team comprised of all ability levels, having both club members and league competitive skiers. We welcome members of all abilities and experience levels; practices and races are as relaxed or competitive as you choose to make them!



Team Structure

Wisconsin Nordic is a club ski team composed of members of all abilities. Members sign up individually for races they want to ski, and the team provides lodging, meals, and transportation for the weekend. Races are a great way to get out and ski during the winter, and socialize with your fellow team members! Races range from sprints to 56k, and members can choose to ski either classic or freestyle techniques at each race. We welcome members of all abilities and experience levels; practices and races are as relaxed or competitive as you choose to make them! All races and practices are options. The team is fully student led. The team is run by two student directors, as well as a board of various positions. Wisconsin Nordic is under the UW-Madison Hoofers Organization, which is a collective of outdoor clubs.

Notable Mentions

Wisconsin Nordic has existed since 2006 and was one of the founding members of the MCSA in 2019. As a team, we have been a dominating force in the Midwest and have recently been growing our presence nationally. In 2024 the Women's team placed 2nd overall at the USCSA National Championship. At the Regional level, the Women's team has been on the podium every year and the Men have been on the podium 4 of the 6 years including being the 2025 champions..

We also engage heavily with the community, volunteering and participating in local events such as the Madison Ironman and the Madison Marathon. Members of our team also work with youth ski organizations throughout the winter season.

Wisconsin Nordic

Practices

All practices are completely optional! Before snow falls, we usually have around 2-3 dry land practices a week with optional strength sessions. During the winter, we have around 3-4 practices per week with team transportation to and from practice venue. Our team has a student practice captain who creates and plans all workouts for practices throughout the year



Trips/Events

In early January, our team hosts a training trip in Cable, Wisconsin at Birkie trailhead for about 3 full days and nights. It's a great time to socialize and get to know the team before the race season starts!

Race Schedule

2026 Season Calendar

Half Noquemanon | 24k Skate or Classic | Marquette, MI
Mt. Ashwabay | 30k Skiathlon | Bayfield, WI
Vasaloppet | 48k or 34k Skate | Mora, MN
MCSA Regional Championships | Various | Rhinelander, WI
American Birkebeiner | 50k Skate or Classic | Hayward, WI
USCSA National Championships
Great Bear Chase

All races are optional! UW-Madison will follow the MCSA schedule as best as possible but the team may go to multiple races at the same time because a proportion of our team is not part of the MCSA. Transportation and lodging is organized and provided by the team.



Joining the Team

All abilities are welcome to join Wisconsin Nordic! Membership fees are \$300 and they cover travel fees. Our ski club is under the UW Hoofers Organization, which is a collective of outdoor clubs and offers scholarships for membership fees. Prospective skiers interested in joining should reach out to uwnordic@gmail.com or [@badgernordic](https://www.instagram.com/badgernordic) on instagram!

Western Region

Rocky Mountain Conference (RMC)



By Christi Boggs & Tyler Hippchen

Note: Currently, all USCSA Nordic Teams competing in the Western Region are members of the Rocky Mountain Conference.

The Rocky Mountain Conference includes nine teams dispersed across three states. Athletes travel throughout the incredible Rocky Mountains to some of the most beautiful venues in the world.

The RMC's consistent goal is to provide high-quality races without sacrificing the joy of skiing.

Our season consists of four weekends, each including two days of racing, to a total of eight RMC races per season. Each weekend is hosted by a different RMC member team. Within this schedule, there are usually two Individual Sprints, one Team Sprint, and a range of USCSA National Championship-format distances (5k to 15k). Our schedule also includes the famous Alley Loop Nordic Marathon in Crested Butte, Colorado, which provides the opportunity for our competitive racers to ski against each other and nationally-ranked athletes in a mass-start 20k. The Alley Loop includes other distances and formats — some of which highly encourage costumes!

Outside of RMC racing, many teams or individuals also compete at the Rocky Mountain Nordic Junior National Qualifiers, RIMSA/FIS, SuperTour Races, US Senior Nationals, and the World University Games.



Rather than having a weekend designated as the RMC Regional Championships, the RMC takes into account results from all Conference races to qualify athletes for the USCSA National Championships. Each team automatically qualifies their top three Men and Women, so long as they complete two classic and two skate races. Teams may also qualify additional athletes if they race under the predetermined points threshold using a modified USSA points system in at least one race.

As one of the smaller conferences in the USCSA, our athletes, coaches, and supporters share a great sense of community that is uncommon in the sporting world. Teams often host social events at their invitational races for athletes to get to know each other better, and it is certainly not uncommon to see athletes from different teams cooling down together or cheering side by side on the race trails. The RMC provides opportunities to race for skiers of all abilities, from those just learning to ski, up to those who are competing for National titles. We welcome all levels of skiers and all types of teams.

Come and join us!

RMC Website:

<https://rmcnordic.weebly.com>

Contact:

Christi Boggs: RMC Nordic Coordinator

CBoggs@uwyo.edu





**COLORADO
COLLEGE**

Colorado College

General Information

Team Name: Colorado College Club Nordic Ski Team

Location: Colorado Springs, CO

Team Size: 10-25

Conference: Rocky Mountain

Contact: o_beland@coloradocollege.edu

The Colorado College Nordic Ski Team is comprised of members from a range of backgrounds and ski experience levels. Our team members span nationally competitive racers to those taking their first classic strides. We strive to have fun as a team while encouraging the diverse personal goals of each of our members.



Team Structure

Our club team is entirely student led. We elect captains every year who manage training, race registration and paperwork, as well as ensure we meet Colorado College's club sport guidelines.

All abilities welcome (no previous skiing experience required)
Some practices (less than half) required
All races optional

Notable Mentions

Our team nearly doubled in size from the 2022-23 season to the 2023-24 season. We also have always held inclusivity as one of our top values as a team. Each year we accept people who have never Nordic skied before, teach them, and encourage them to race with us.

3rd place, conference women, 2023
3rd place, conference team men, 2023
2nd place, conference team women, 2023
3rd place, conference team men, 2024

Colorado College Club Nordic

Practices

During the fall semester leading up to the race season, we run as a team twice a week. This typically consists of a long run and a workout. We also hold a team lift once a week. These practices are largely informal and are open to every skill level. When there is enough snow, we train on skis at Woodmoor Nordic Center. Additionally, we host a training weekend in December to ensure we can get on snow before the season starts. During the off-season we keep the team together by joining intramurals and holding more fun-driven practices.



Trips/Events

We take a training trip to either Snow Mountain Ranch, CO or Steamboat Springs, CO in December. We stay for the weekend, ideally getting 2 full days of training on snow. Recently we have begun incorporating intramural sports into our training.

Race Schedule

Colorado Mesa University Invitational: Snow Mountain Ranch, CO. 2 races: 15k classic (collegiate), 1k - 1.5k skate sprint (collegiate)

Western State University Invitational: Crested Butte, CO. 2 races: 21k skate (citizen), 5k classic (collegiate)

Colorado State University Invitational: Leadville, CO. 2 races: 9k skate (collegiate), 9 by 1k classic relay (collegiate)

University of Wyoming Invitational: Laramie, WY. 2 races: 1.5k classic sprint (collegiate), 19k skate (citizen)



Joining the Team

We have no official team fees, but we do ask members who attend races to cover a part of travel, food, and housing expenses for the races they attend. These costs typically are around \$15 - \$30 per race weekend. Colorado College covers race registration fees. Membership fees do not cover travel or racing costs. No ski-specific scholarships are available.



CROSS COUNTRY SKI TEAM

Colorado Mesa University

General Information

Location: Grand Junction, CO

Team Size: 10

Conference: Rocky Mountain

Contact: mwiesiolek@coloradomesa.edu

The Colorado Mesa University Cross Country Ski Team provides student-athletes with the opportunity to train, race, and grow in cross country skiing at the national collegiate level. We proudly represent Colorado Mesa University and the Western Slope with grit, inclusivity, and professionalism.

Our mission is to lower barriers to participation while delivering high-level coaching, skill development, and national-level racing experiences. We are committed to building lifelong athletic and personal skills, supporting student success, and strengthening community partnerships through youth outreach, adaptive sport collaboration, and local athlete development.



Team Structure

The Colorado Mesa University Cross Country Ski Team is a club team organized by a part-time coach, a coach's assistant, and a student team captain. Our team's size has varied over the years, peaking at 14 skiers. We are currently trying not to exceed more than eight student-athletes to preserve the quality of the experience for each participant. Our program welcomes student-athletes of all skill levels, from those eager to learn new techniques to those ready to push their limits and excel! At least some ski experience is required. Half of practices and some races are required to be on the team.

Notable Mentions

Cross country skiing has been a club sport at CMU since 2007. The team underwent a revamp during the 2021-22 season with the onboarding of a new professional coach. This included modernizing the approach to student training and making significant investments in team facilities.

At the National level, CMU has found incredible success. In 2018 the team was National Champions. In 2024, the team brought home two silver medals and six All-American titles. The team has qualified and sent athletes nearly every year.

Colorado Mesa University

Practices

Practices take place three to four times per week on the snow, and three to four times per week for fitness. Half of practices are required. Practices are organized by the coaches and captain.



Trips/Events

During the pre-season, the team gathers for bonding and training camps to prepare both physically and culturally for the coming season. Throughout the competitive season, the CMU Cross Country Ski Team competes in all 10 (5 weekends) USCSA Rocky Mountain Conference races. We also participate in early-season events held at notable Colorado venues, such as Aspen and Snow Mountain Ranch. Six qualified athletes will travel to USCSA Nationals in Lake Placid, NY in March 2026 to compete at the national level.

Race Schedule

Some races (less than half) are required. For up-to-date race and event schedule, go to cmunordic.org/events/teamcalendar

2025 Race Schedule:

January 16-19, 2025: CMU Invitational and USCSA Ski Racing Festival, Snow Mountain Ranch, Colorado

January 31 - February 2, 2025: The Alley Loop Western Colorado University Invitational, Crested Butte, Colorado

February 7-9, 2025: Colorado State Invitational, Leadville, Colorado

February 14-16, 2025: University of Wyoming Invitational, Laramie, Wyoming

March 3-9, 2025: USCSA National Championships, Bend, Oregon



Joining the Team

Interested in skiing with us? The CMU Cross Country Ski Team is always looking for motivated student-athletes to grow, train, and compete together. See all requirements and apply here:

cmunordic.org/crosscountryskiing/join



Colorado State University



General Information

Team Name: CSU Nordic Ski Club

Location: Fort Collins, CO

Team Size: 15-30 people

Conference: Rocky Mountain

Contact: nordicrams@gmail.com

The CSU Nordic Ski Club provides an opportunity for CSU students to Nordic ski race competitively & recreationally at the collegiate level. We are a co-ed team and inclusive to all skiing levels and abilities. This team is formatted so you attend as many or as few practices and races as you want – you put in what you expect to get out.



Team Structure

We are a 100% student-led, Club Team. We have a six person officer team that consists of a President, Vice President, two Peer education officers, Travel & Safety Officer, and Treasurer. This season will be our first working with a part-time volunteer coach who will act as a wax tech and practice coordinator. Our practices are led by our student leaders and are formatted for all experience levels. You will get the opportunity to work with technique coaches during our Winter Break camps.

Notable Mentions

The team dates back to 1981, though it dissolved at some point and was re-founded in December, 2020. CSU Nordic has grown over the five years from a team of two, to a team of roughly 28 skiers.

CSU Nordic has played a role in connecting local skiers from Fort Collins and surrounding areas and have introduced them to the Rocky Mountain Conference and the idea of racing post-high school!

CSU Nordic

Practices

Practices are officer-led but we receive training plans from our part-time coach. Practices are optional and held every Tuesday/Thursday night. We do two practices a week during the school year- one strength and one endurance. When there is snow, there are more opportunities to get out and ski that are informal. All practices are optional, but the best way to make friends and be a better skier is to attend practices.



Trips/Events

For the past four seasons, CSU has held an invitational race in Leadville, CO for the Rocky Mountain Conference. This is a two day event, one distance race and one team sprint event. We have also hosted two training trips for our team over CSU's fall break and Winter breaks. This is an opportunity for our team to get to know one-another over a few days of training in the mountains. This season we will be hosting two winter break training camps.

Race Schedule

2025 Season Schedule

- 1/25-26 USCSA Cross Country Ski Racing Festival; YMCA of the Rockies, CO
- 2/1-2 Alley Loop/Classic; Crested Butte, CO
- 2/15-16 CSU Invite; Leadville, CO
- 3/1-2 Laramie Loppet; Laramie, WY
- 3/7-3/11 USCSA Nationals; Bend, OR



Joining the Team

\$50 to join, more is required to travel with us to races, ski weekends, and training camps. There are opportunities to reduce the cost of travel - just ask!

With the \$50 membership fee, you get trail passes to Happy Jack ski area, access to our waxing supplies, and can join for practices.



Montana State University

General Information

Team Name: Nordic Ski Club @ MSU

Location: Bozeman, MT

Team Size: 20-25

Conference: Grand Teton

Contact: msuclubskiing@gmail.com

We are a cross country ski club based out of Montana State University in Bozeman, MT. We participate in local community races in the Bozeman area, competing against top non-college affiliated ski clubs and development programs.



Team Structure

Our club team is run by our officers: president, vice president, treasurer, secretary, and several safety officers. These leadership team is entirely made up of students and is responsible for designing training plans, providing wax recommendations and helping wax skis, and organizing all team logistics. All leadership positions are elected by the team at the end of each year. All practices and races are completely optional, but highly encouraged! There is also no official academic requirement, but students who are not in good academic standing through the university are not approved to travel with the team for trips and races. We require 6 hours of community service from all club members and facilitate opportunities to complete this.

All abilities welcome (no previous skiing experience required)

Notable Mentions

Our team has grown rapidly in the last two years. It was founded a few years before the pandemic began, and the membership numbers were down for several years due to Covid. In the last few years, our team has come back stronger than ever! We now have more than doubled our team.

Our skiers place very well at our races, we often have several members on the podium in various distances and styles. We also contribute the skiing community by coaching the youth programs for Bridger Ski Foundation. Many of our club members also volunteer for Eagle Mount, a local nonprofit that helps individuals with mental and physical disabilities learn to cross country ski. We volunteer at our local events and are well known in the ski community here for our CatSnackz snack cart that sells food and beverages at local races.

MSU Nordic Ski Club

Practices

Practices happen three times a week during the off season (fall semester) and four times a week during the winter. Practices times are decided at the start of each semester based on the general availability of our team, but we typically have early morning options and late afternoon options each week. The practices are led by our student officer team. We also encourage skiers outside of official practice times, including during the summer.



Trips/Events

Our team travels to the Tetons during the spring semester for a training trip over Presidents' Day Weekend. We explore new trails in Grand Teton National Park and Targhee Canyon, play games, and have a great time! We also try to make it to the American Birkebeiner each year, weather permitting. Throughout the school year, our team participates in community and school events as much as possible.

Race Schedule

2026 Season Calendar

Ski for Soren, Various Freestyle, Bozeman, MT, Public Race, (January 17, 2026)
Skyloppet Festival, Various Classic and Freestyle, Bozeman, MT, Public Race, (February 14-15, 2026)
American Birkebeiner, 50K Skate or Classic, Hayward, WI, Public Race, February 18-22, 2026)
Rendezvous Ski Festival, Various Classic and Freestyle, West Yellowstone, MT, Public Race, (March 7, 2026)



Joining the Team

Our annual membership fees are \$55. This covers access to our team passes to Crosscut, the team waxing, involvement in team bonding events, and traveling and lodging. Membership fees cover travel costs only. On longer trips, such as our team trip to the Tetons or the Birkebeiner, participants may be asked to chip in for gas. Race fees are covered by individual skiers, though depending on our success fundraising each season, we try to cover as much of the race fees as possible. If the race fees are an obstacle to someone participating, the club is prepared to help cover their fees. This is partially dependent on fundraising, but we prioritize skier involvement as much as possible.



United States Air Force Academy

General Information

Team Name: USAFA Nordic Ski

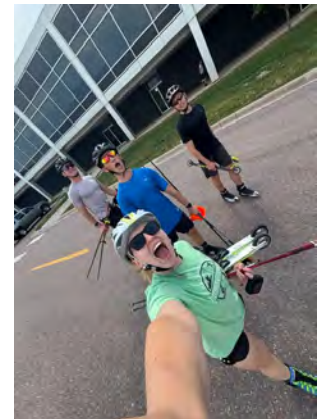
Location: Colorado Springs, CO

Team Size: 15-20

Conference: Rocky Mountain

Contact: C25evan.hoch@afacademy.af.edu

USAFA Nordic is a competitive club team that exists to train and race hard, have fun, and find an escape from the grind of the Academy. You're not going to come to USAFA for the Nordic program, but if the Academy is right for you, there's no better way to spend the winter than in the mountains with the Nordic team.



Team Structure

USAFA Nordic is the Nordic ski racing club at the Air Force Academy. USAFA Nordic has no formal coaching or wax techs. We design our own workouts, set our own practice schedules, and manage all of our travel ourselves. Most practices are mandatory for members who want to be excused from other military formations, while practices are optional for all others. All races are optional. We have 1-2 captains who coordinate logistics with the input of veteran skiers on the team. All abilities are welcome, no skiing experience is required.

Notable Mentions

USAFA Nordic has existed at the Academy since at least the 1980s. In recent years, the team size has stayed 10-20 skiers. Nearly every year USAFA receives the Armed Services Award, as well as makes a strong appearance at the USCSA National Championships. Nearly all skiers are named Academic All Americans at the National Championships.

USAFA Nordic

Practices

In the fall, we usually practice four to five times per week in the afternoons, unless we have military training that takes precedence. There is no formal coaching for practices, but we do have established workout plans. From January to March we train, travel, or race 7 days a week. Practices occur at the Academy, and are almost always running, roller skiing, or lifting. There is very rarely enough snow to ski while on campus. There is no team off season training in the summer between May and August.



Trips/Events

Prior to the season, USAFA Nordic does two to four weekend training trips to Snow Mountain Ranch (about 3 hours away). During the season the team is racing most weekends.

Race Schedule

Standard Schedule

CMU Invite: Snow Mountain Ranch, CO, Collegiate
Alley Loop: Crested Butte, CO, Citizen 21K
Colorado Western Invite: Crested Butte, CO, Collegiate
CSU Invite: Leadville, CO, Collegiate
Laramie Loppet: Laramie, WY, Collegiate
USCSA National Championships

All races optional and covered by team fees.



Joining the Team

Everyone is welcome on the team, no skiing experience is required. Membership fees (as of 2025) are \$220. This covers ALL expenses for seven weekends of travel and the one week at Nationals. The fees also include equipment. However, no one will be denied a spot on the team due to finances. Prospective skiers should reach out via Instagram @af_nordic, or contact Ian Klein at (952)-999-6593 or email c28ian.klein@afacademy.af.edu.



University of Colorado - Boulder

General Information

Team Name: CU Boulder Nordic Ski Club

Location: Boulder, CO

Team Size: ~15

Conference: Rocky Mountain

Contact: nordicskiclub@colorado.edu

CU Boulder Nordic Ski Club is committed to creating an encouraging, inclusive community for individuals to learn how to Nordic ski, reach their athletic potential as recreational or competitive skiers, and have fun!



Team Structure

Our team is entirely student-led, but we are hoping to get a coach and/or wax tech in the coming season. The student leadership positions are President, Treasurer, Sponsorship Director, Travel Manager, and Social Media Director. These roles cover everything from coordinating workouts, overnight trips, updating our Instagram, testing wax, and finances!

Notable Mentions

Our team was founded in 2023, and we are growing fast! We are becoming an integral part of the Nordic skiing community in Boulder and beyond. This past season we had several All Americans and one of our skiers was the overall leader for the women's conference.

CU Boulder Nordic

Practices

There are 2 practices a week that are open to everyone. One is usually strength-based while the other is more endurance. They start in September and go until the end of the racing season in mid-March. For more competitive skiers, we will happily work with you to help create a training plan that fits your goals. This typically results in training 6 days a week for about 1-3 hours a day, including the off-season and summer. Many of our competitive athletes train together throughout the week. They are not formally coached, but our athletes are always eager to offer their advice! Transportation can be organized between athletes who want to train together. Most athletes train in and around Boulder, especially because Eldora Nordic Center is only 40 minutes away! Once there is snow we have weekend training trips to Frisco Nordic Center, Snow Mountain Ranch, or Eldora Nordic Center (depending on where conditions are best). There is also groomed skiing in Boulder when it snows enough.



Trips/Events

We do a Thanksgiving training trip every year! Last year it was to Grand Mesa, CO, but the location changes based on where the best early season snow is. We also do intermittent community races and sometimes attend larger races (like US Nationals). Additionally, we have other events, like trivia nights and fundraisers.

Race Schedule

2025 Season Schedule

January 25th - 26th: Colorado Mesa University Invitational: Snow Mountain Ranch, CO. 2 races: 15k skate (collegiate), 1k classic sprint (collegiate)
February 1st - 2nd: Western State University Invitational: Crested Butte, CO. 2 races: 21k skate (citizen), 5k classic (collegiate)
February 15th - 16th: Colorado State University Invitational: Leadville, CO. 2 races: 10k classic (collegiate), 1k skate team relay (collegiate)
February 22nd - 23rd: University of Wyoming Invitational: Laramie, WY. 2 races: 15k classic (collegiate), 7.5k skate (citizen)
March 7th - 11th: USCSA National Championships: Bend, OR. 4 races: 7.5k skate, 1k classic sprint, 15k classic, 1k skate team sprint



Joining the Team

All abilities are welcome. Practices and races are not required, but the more you participate the more fun it will be!

Instead of annual team membership fees, our team uses a pay-as-you-play model, so you only pay dues for the events that you come to (such as our Thanksgiving training camp, races, and overnight training trips). Races are about \$80 per weekend and overnight training trips are \$50 each. We do fundraisers in the beginning of the year, and these are crucial to keeping costs lower for members. All waxing costs are covered in the event dues, and all other costs get split between the club and event dues (like transportation, lodging, food, race registration, etc.). We don't have athletic/tuition scholarships available; however we do not want finances to be why a person does not participate and are happy to work out a solution!

Prospective skiers can get in touch by emailing nordicskiclub@colorado.edu or using our website.



University of Wyoming

General Information

Location: Laramie, WY

Team Size: ~30

Conference: Rocky Mountain

Contact: uwyoski@gmail.com

University of Wyoming Nordic Ski Team aims to create a community upon which a foundation of fundraising and coaching allows each athlete to reach her, his, or their full potential in both skiing and leadership while making a positive environmental, social and community impact.



Team Structure

The University of Wyoming Ski Team offers diverse options for continuing your ski career in college. Established in 1998 by athletes from Wyoming and Colorado, the team welcomes athletes of all abilities and interests. The team is divided into four parts: the elite racing team, the competitive racing team, the recreational racing team and the non-racing team. The team is extremely fortunate to have two qualified coaches who are willing to donate their time and expertise; they are volunteer and receive no pay. These coaches are faculty at the University of Wyoming. A student governing body composed of ten elected athletes provides team leadership, organizes fund raising and volunteer activities, and allows the team to remain connected to the community. At some events, alumni assist as wax techs. There are no paid personnel, everyone supports the team through a network of love. Everyone is welcome on the team, no ski experience is required. All practices and races are optional!

Notable Mentions

The University of Wyoming Nordic Ski team was established and joined the USCSA in 1998. In the past five years, the team has grown substantially in numbers. UW Nordic has come home with serious hardware, with 14 Overall Team Titles, 11 Individual Overall Titles, over 30 Individual Race Titles, over 140 Overall Individual All-Americans, over 360 Individual All-American Finishes, and, most importantly, over 200 Academic All-Americans!

The team raises upwards of \$30,000 every year to fund the team. We work to create a positive social and environmental impact through our fundraising through activities such as Trash2Treasures. We also have an agreement with Shanghai University of Sport (SUS) and for 3 years we have welcomed 10 students athletes from SUS onto our team to learn to ski and coach skiing. Several alumni have returned to China to coach athletes of their own.

University of Wyoming

Practices

With two coaches to guide practices, we train five to six days per week from September to March, with group training for those interested during the summer. From April to May there is training two to three days a week. The full training plan is available online! All practices are optional where skiers are able to choose what they want to attend.



Trips/Events

We take three training camps in the fall. Distance Camp in Leadville, CO on Labor Day weekend, speed camp in Fort Robinson, NE during the mid-semester break, and Thanksgiving Camp generally in Leadville, CO or Mesa, CO. We also travel around the region (WY and CO) for adventure training in the summer and fall. We host a High School Camp on Memorial Day Weekend where we have access to fantastic crust skiing and world-class speakers. Finally, the spring semester concludes with a team backpacking trip in the canyons of Utah!

Race Schedule

All races are optional! The winter comes with up to 10 race weekends. Competitive and elite team racers compete in the United States Collegiate Ski and Snowboard Association (USCSA), and the elite team also does 2-3 NCAA Division I races each year Laramie (Citizen Race), Rocky Mt Nordic (NRL Points Race), US National Championships, University of Utah Invite (RMISA & NRL Points Race), Colorado Mesa University Invitational & Alley Loop (Citizen and Collegiate race), Denver University Invitational (RMISA & NRL Points Race), Colorado State University Invitational (Collegiate), UW Invitational (Collegiate Race), Laramie Loppet (Citizen), and USCSA National Championships.



Joining the Team

There is no ski experience required to join, and all races are optional. There is an \$80 membership fee, all other race and camp fees are covered by fundraising. If you are interested in joining the University of Wyoming Nordic Ski Team, reach out at uwyoski@gmail.com!



Western Colorado University

General Information

Team Name: Western Nordic

Location: Gunnison, CO

Team Size: 15-20

Conference: Rocky Mountain

Contact: mountainsports@western.edu

The Western Nordic Ski Team aims to be a leader in collegiate skiing and the USCSA. The Western Nordic experience embodies high quality training, professional coaching, robust competition schedule, and access to world class trails and snow.



Team Structure

Western Nordic, a varsity team, provides year-round professional coaching. The Head Coach and Assistant Coach work together to lead practices, write training plans, coordinate team travel, and serve as wax techs among other things. At championship events, additional volunteer coaching staff may assist with wax testing & application. Although there are no formal student leadership positions within the team, team members are encouraged to take initiative and contribute their share to the team's success. This includes assisting with social media, cooking team meals, packing team equipment for travel, etc. There is no performance criteria for joining the team, but to race skiers need to try out. At least half of practices and races are required for the team.

Notable Mentions

Western Colorado University's ski team was founded in 1946, and has evolved many times over the years. Although Western fielded an NCAA team prior to 2008, the team also competed in the NCSA (what we now know as USCSA) championships on numerous occasions in the 1980's and 1990's, taking home numerous championship titles. When the NCAA team was cut in 2008, Western's team refocused on the USCSA as a competitive avenue, and has had much success since.

The men's team has won USCSA Nationals in 2011, 2018, and 2023. The women's team has claimed numerous team podiums in recent USCSA National Championships, with a runner's up title in the 2018 overall, and third in 2025. Both the men's and women's have come home with numerous AllAmerican results every year for the past ten years. At the conference level, Western continues to be a leader in the Rocky Mountain Conference. The team hosts a conference race annually, and consistently places at the top of the field at each conference race and in the overall standings.

Western Nordic

Practices

Training consists of six to eight sessions per week, beginning with dryland training in the fall. A typical week of training consists of Tuesday and Thursday morning strength sessions, Monday through Friday afternoon practice, and an over distance ski on Saturday morning. Coaches design training plans to fit each athlete and their goals. Many athletes choose to compete with our Trail Running Team or Mountain Bike Team during the fall season. Located high in the Colorado mountains with access to over 75km of groomed trails, there is no shortage of natural snow. During this past season, the team was on snow by early October, and skiing groomed trails by early November. Half or more practices are required.



Trips/Events

Every year during Western's Thanksgiving break, the Nordic Team hosts a week long training camp on snow. As the first trip of the season, this serves as an opportunity for team bonding, time on snow, and focused training. Travel has included West Yellowstone, MT, and Canmore, AB, in recent years.

Additionally, Western hosts the WCU Invitational in Crested Butte every February. This event serves as a USCSA qualifier.

Race Schedule

2026 Travel Schedule (Tentative)

November 22rd - November 29th - Training Camp - Canmore, AB
December 13th - Crested Butte Town Series Race - Crested Butte, CO
January 2nd - January 9th - US Nationals - Lake Placid, NY
January 23rd - 25th - CMU Invite - Winter Park, CO
February 7th - 8th - WCU Invite - Crested Butte, CO
February 14th - 15th - CSU Invite - Leadville, CO
February 28h - March 1st - UWYO Invite - Laramie, WY
March 9th - 14th - USCSA Nationals - Lake Placid, NY

Half of races are required.



Joining the Team

Dues are \$1500, this covers coaching, travel (food, lodging, transportation), transportation to practices, season pass to Crested Butte Nordic, uniforms (suit, warmups, puffy jacket), race entries, and wax supplies (basically all expenses). Dues scholarships are available based on financial need and/or performance. Athletes may contact us throughout the year, but we would recommend that they reach out early. Our scholarship portal opens in January for the following academic year, and prospective students must be accepted into Western before applying for scholarships. Prospective skiers should reach out to mountainsports@western.edu!



Whitman College

General Information

Team Name: Whitman Nordic Ski Team

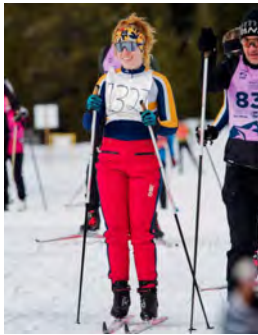
Location: Walla Walla, WA

Team Size: ~40

Conference: Northwest

Contact: kellym3@whitman.edu

The Nordic Ski Team welcomes anyone who wants to join their club! Their members have a wide range of experience from members who have never put skis on before. To members who have skied their whole life and are seeking training partners. When you join the Nordic Ski team you'll be sure to find the ski environment you're looking for and enjoy the company around you.



Team Structure

The Whitman Nordic team does not employ a full-time coach; the team is entirely student-led, organized, and directed. We have two captains who handle the budgeting, coordinating, and training aspects for the club. We travel weekends in the spring to go to races, and spend quality time team bonding in the car and hotels where we stay. We rely on volunteers from the Whitman community to act as chaperones for our travel days.

All abilities welcome (no previous skiing experience required).

Notable Mentions

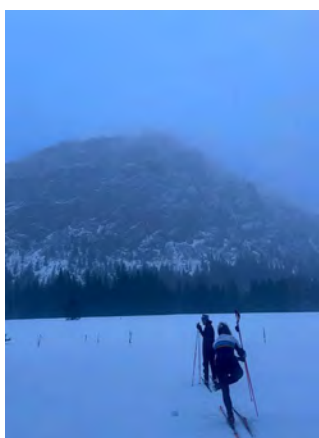
Whitman Nordic Skiing is a long-standing club sport at Whitman that has existed since 2001 with a welcoming, inclusive culture that emphasizes participation at every level. While the team has grown steadily in recent years, it remains close-knit and approachable—making it easy for new skiers to get involved, whether they are seasoned racers or just learning the sport.

The team does not play a formal role in regional governance or race organizing, but our members are active participants in the Pacific Northwest Nordic community. Many students mentor less-experienced skiers, and share waxing or technique knowledge with teammates. Our emphasis on peer leadership, teaching, and support makes the team unique, creating an environment where everyone can grow together.

Whitman Nordic Ski Team

Practices

We have practices twice a week. We usually do a dryland training workout in the gym for one of the practices, and then a run the other day. We have a training trip that runs over Thanksgiving break, where people can train on snow if they haven't been on it for a while, or have never been on snow that's where they learn to ski. The season runs from September to March.



Trips/Events

Every Thanksgiving break you can find the Nordic Ski team in their weekend getaway to West Yellowstone for some training! Gear, transportation, housing, food – all the ingredients for a ski race weekend are provided, just bring yourself and enthusiasm for the sport.

Race Schedule

We typically ski community races. Here is our typical schedule:

Ski to the Sun | Winthrop, WA

Spokane Loppet | Mead, WA

Boulder Mountain tour | Sun Valley, ID

USCSA Nationals



Joining the Team

Everyone is welcome and no previous ski experience is required. Everything but food is covered by the Nordic budget. We have skis and poles and a wax room that people can utilize and the trips are paid for with the endowment, membership fees cover travel and racing costs. Contact Maura Kelly to join by email: kellym3@whitman.edu.