

- Easiest
- Slightly Difficult
- ◆ Difficult
- ◆ Very Difficult
- ◆ Extremely Difficult
- Freestyle Terrain
- Uphill Route
- Uphill Transition Location
- ★ Adventure Zone
- Chair Lift
- Gondola
- Halfpipe
- Slow Area
- Ski Area Boundary
- First Aid / Ski Patrol
- Hosts / Guest Info
- Food & Beverage
- Alcohol Served
- Restrooms
- Phone Available
- Lodging
- Tickets & Guest Services
- Bus & Parking Shuttle
- Shopping

Route to Village Ski Back Trail —————
Ski/ride all the way back to The Village. To access the Ski Back Trail via green/blue runs, take Roller Coaster Express (Chair 4) or Gold Rush Express (Chair 10).

Uphill Skinning & Splitboarding Routes —————
We offer 8 routes for uphill access during operating hours only. Special pass and arm band are required. See reverse side for more info. Always check the Lift & Trail Status online or on the app before venturing out.



MAMMOTH MOUNTAIN IS PROUD TO PARTNER WITH:



Tamarack Lodge
(Nordic)

Chair 4
Skate Sprint,
Slopestyle & Rail Jam
NEW Cross Venue

Main Lodge
Access to Cross, Alpine
& Hospitality Venues

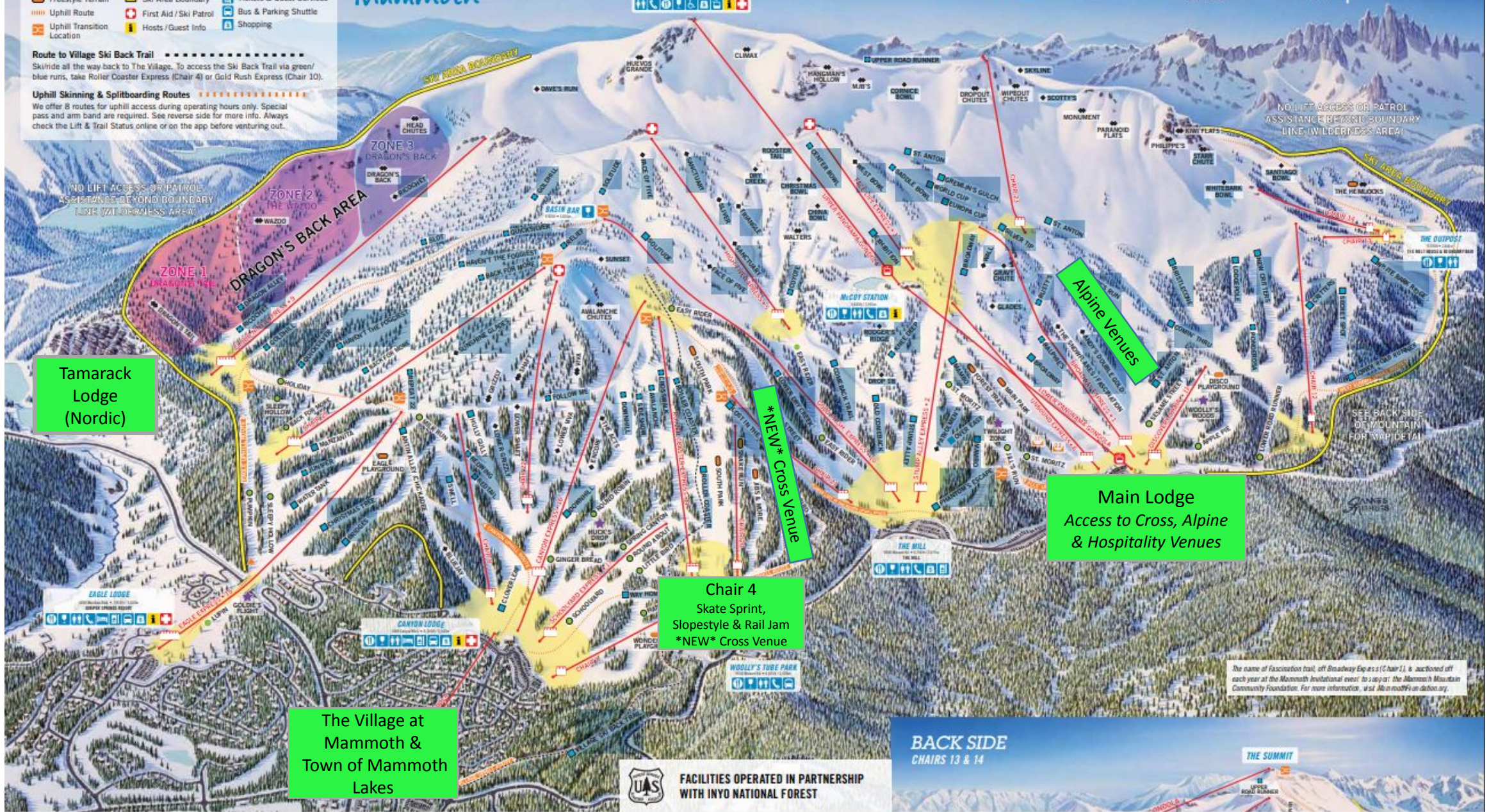
The Village at
Mammoth &
Town of Mammoth
Lakes

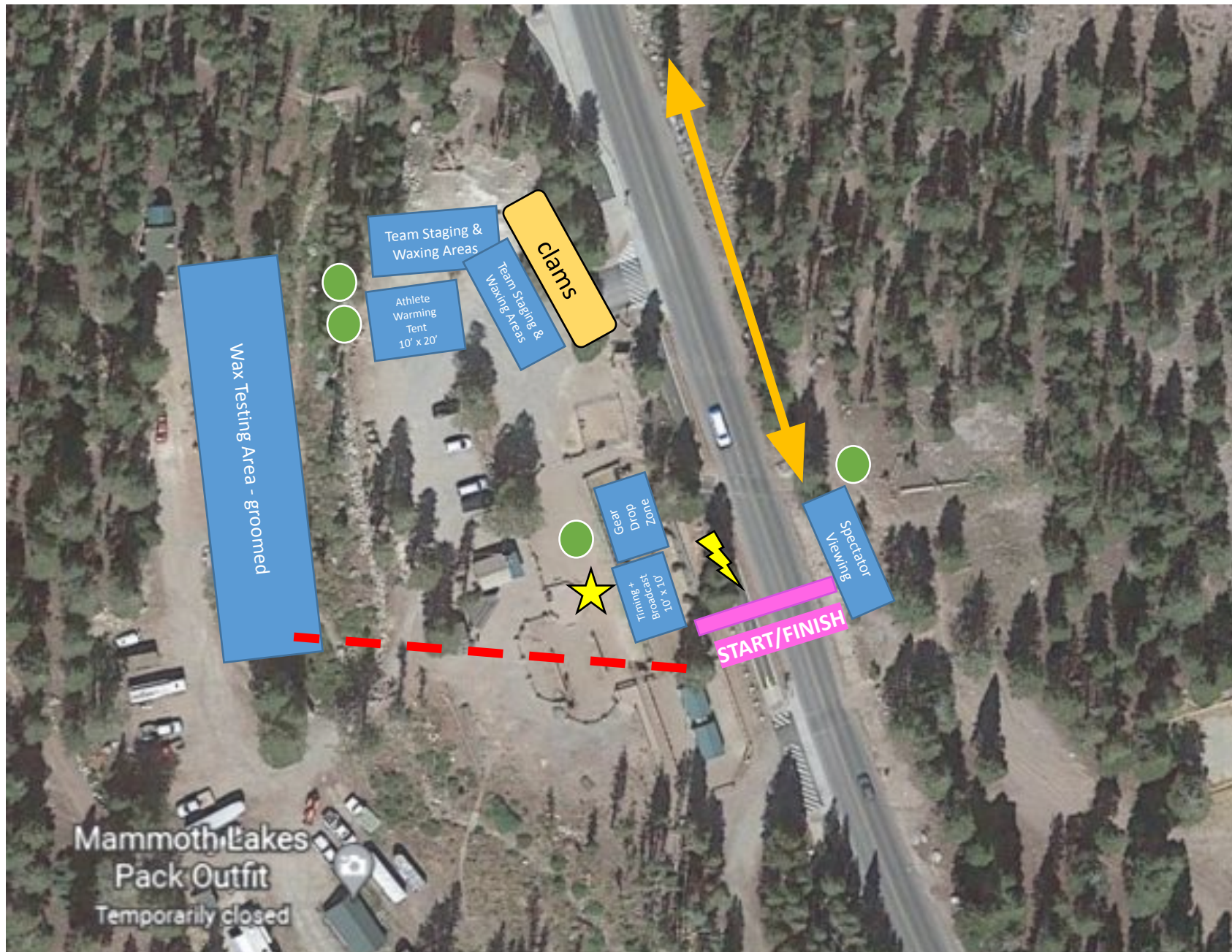
US FACILITIES OPERATED IN PARTNERSHIP
WITH INYO NATIONAL FOREST

BACK SIDE
CHAIRS 13 & 14

The name of Fascination trail, off Broadway Express (Chair 1), is auctioned off each year at the Mammoth Invitational event, to support the Mammoth Mountain Community Foundation. For more information, visit mmtf-foundation.org.

THE SUMMIT





Nordic Start/Finish Area @ Tamarack Cross Country Ski Center

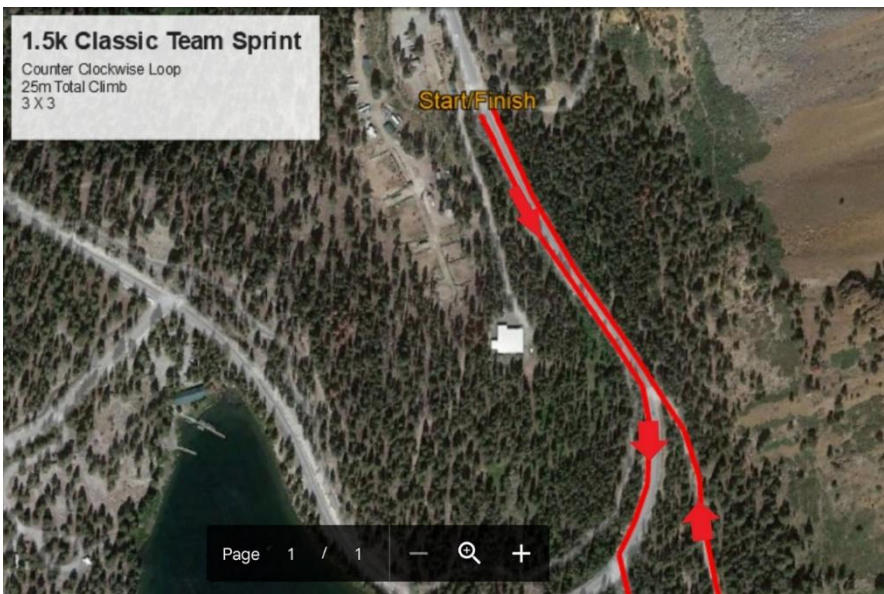
⚡ IT – Starlink set-up

★ Power - Whisper Jet 25 KVA Generator

— Sidewinder Trail to Wax Testing Area

● Porto Potties – exact locations to be determined during placement.
Nancy or Dave to make the call based guest flow.

↔ Spectator Walking Path to viewing area



- Most portions of the distance courses that passed through high wind, drifted, and unprotected areas have been rerouted on to more protected wooded trails.
- The 2 different distance courses have been condensed into one 7.5k loop (15k still does 2 laps) to facilitate quality grooming.

The start/finish area at the Pack Station not been altered.

Distances and format; 1x7.5 for classic and 2x7.5 for free technique remains the same.

Nordic Course Maps

Tamarack Cross Country Ski Center

7.5K Individual Start Classic – Thurs. 3/9

1.5K Classic Team Sprint – Fri. 3/10

15K Mass Start Skate- Sat. 3/11



Chair 4 Venues – Cross, Slopestyle, Rail Jam, Skate Sprint

Public/Spectator Access & Start/Finish Areas



South Park

Rail Jam & Slopestyle Courses

To Access Rail Jam:

- Hike (200 ft.) from base of Chair 4

To Access Slopestyle:

- Take Chair 4 to South Park or Roller Coaster
- Start is midway down Roller Coaster

Spectator access is via Chair 4 base area, outside the rope line of either course



Cross Course (Transition Park)

To Access:

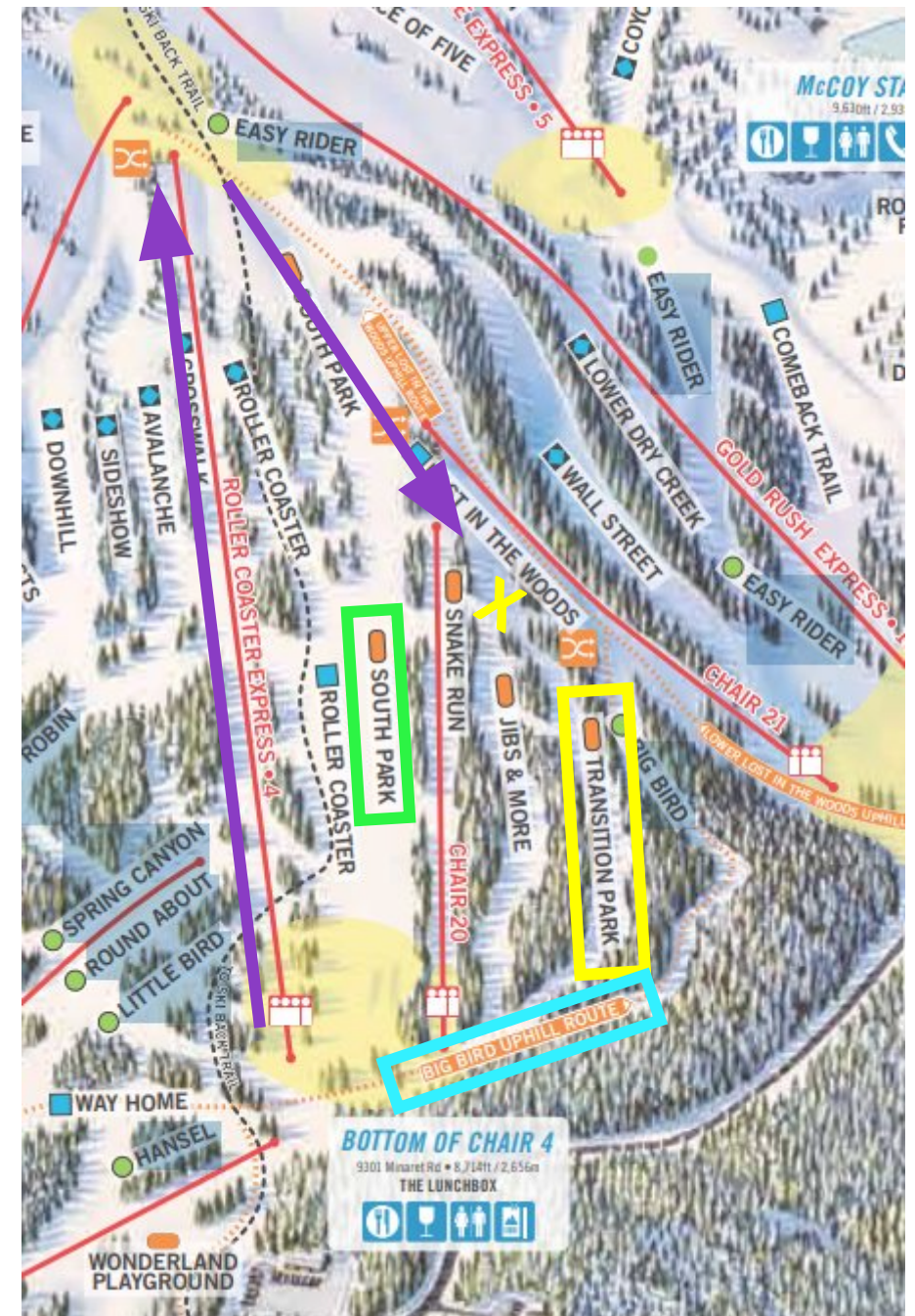
- Take Chair 4 to South Park or Lost in the Woods
- Follow signs for Transition Park, start will be at the split of Transition Park and Jibs & More
- Athletes will have a narrow exit lane at the finish area to get back to Chair 4 – please be aware of the Skate Sprint course at the base of Cross

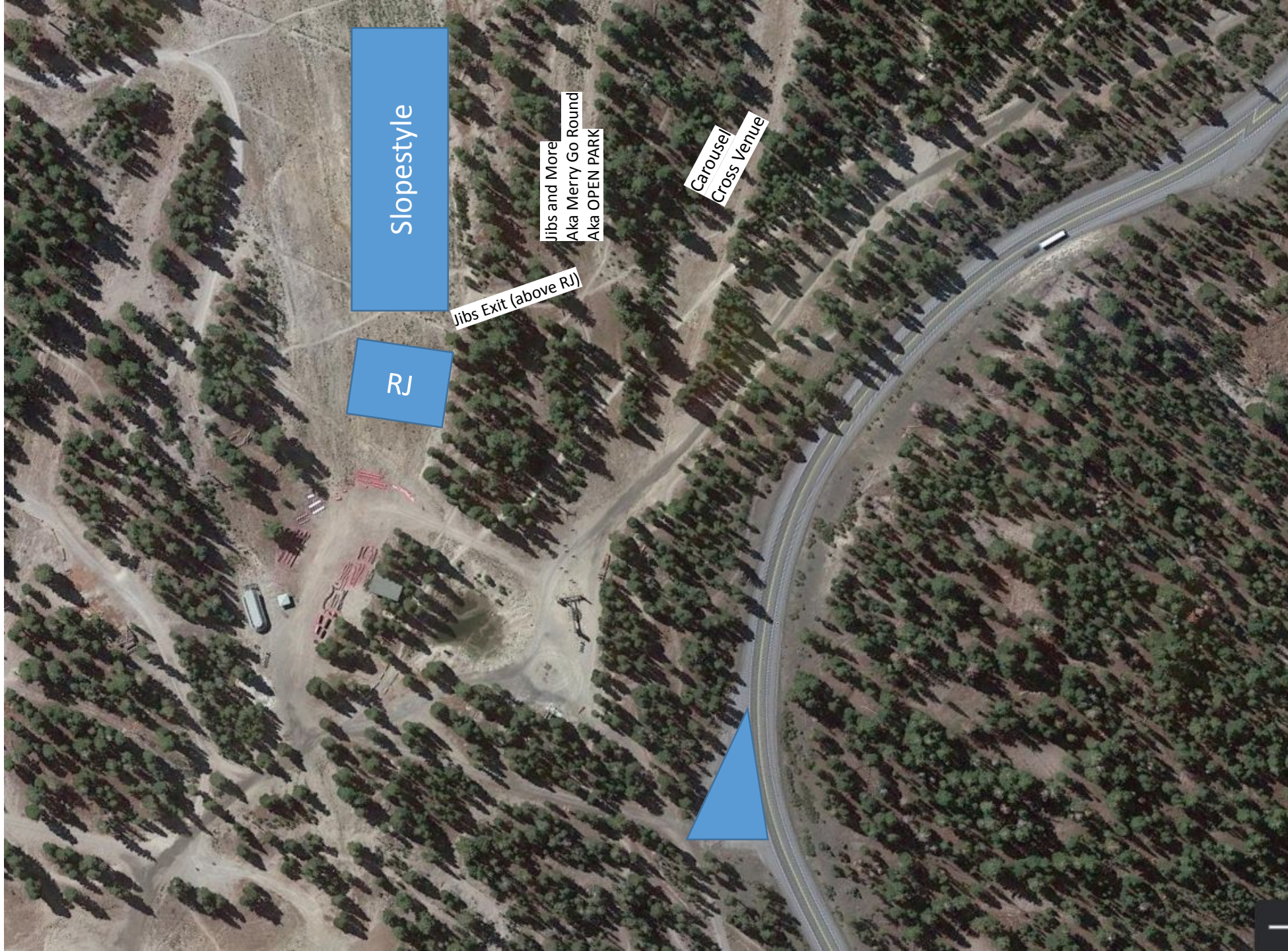


Skate Sprint Course (Chair 20 base)

To Access:

- Walk from Chair 4 parking lot
- All facilities at Chair 4 base area





Tues. – all venues open for training, closed to public
Exit Jibs in between SS + RJ
Boneyard/Big Bird open

Weds. – Big Bird Closed
Jibs open
Lower South Park closed
Carousel closed
Skate Sprint @ Ch. 20

Jibs exit via Snake Run
Carousel exit via small lane
skiers right of Boneyard

Thurs. – Jibs open
Lower South Park closed
Carousel closed
Skate Sprint @ Ch. 20

Jibs + Carousel exit via
Boneyard

Fri.
Rail Jam Hike Park closed
Everything else open

Sat.
No events at Chair 4!!
Everything Open!!

1.2k Individual Free Sprint



Nordic – Chair 20 Venue

1.2K Individual Free Sprint – Wednesday 3/8

Route:

- Start on Northern side of Chair 20
- Competitors race up the Boneyard Rd.
- Loop around on the Big Bird side of the Big Bird/Boneyard junction
- Skate down Boneyard, past pond, up towards Chair 7
- Loop around tree island just south of Top of Chair 7
- Finish area on South side of Chair 20

Ops:

- Re-route all machinery (sleds & cats) to cut through trees parallel to Boneyard
- Crossing Guard at Ch. 4 Parking Access road for guest flow
- Broadcast & Timing will be located as close to Chair 20 as possible, in an EZ-up with walls & Clam (fishing tent)



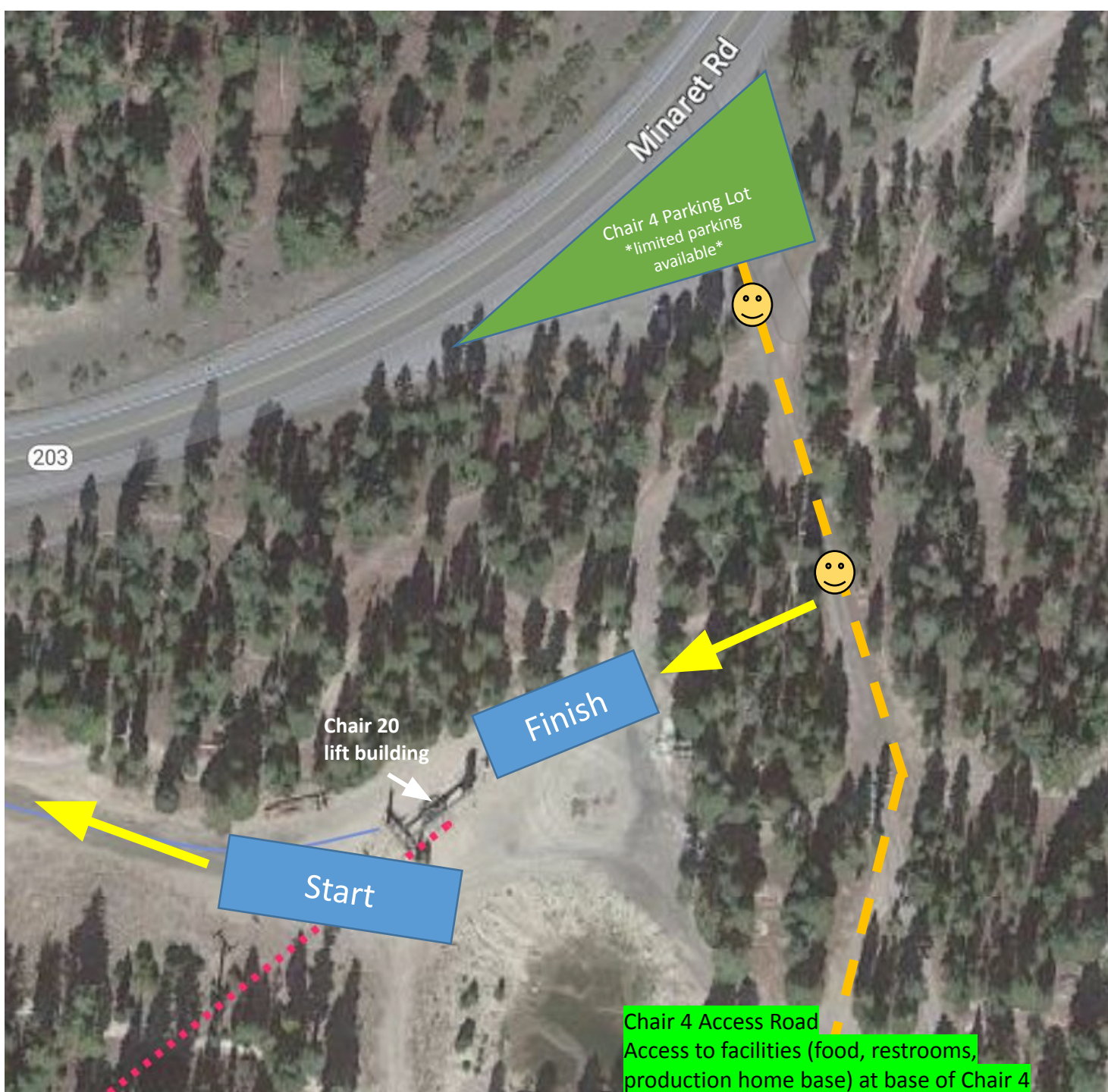
IT – Network from Ch. 20 Building to EZ-up

- Cat 5 or 6 cable run to Production & Timing crews, 15 mbps up/down



Power – Pull from Ch. 20 Building

- Broadcast >2000w
- PA System = 2800w
- Timing = TBD



Nordic – Chair 20 Venue

**Public Access to Chair 4 / Lower South Park –
*Rail Jam & Slopestyle Venue & Facilities***



Access Road from Ch. 4 Parking Lot & to Ch. 4 restrooms and facilities



Host Support / Crossing Guard locations

Facilities at Chair 4

- Restrooms
- The Lunch Box

No ticket, retail or rental purchases available- must go to Main Lodge.

Public Transit access –

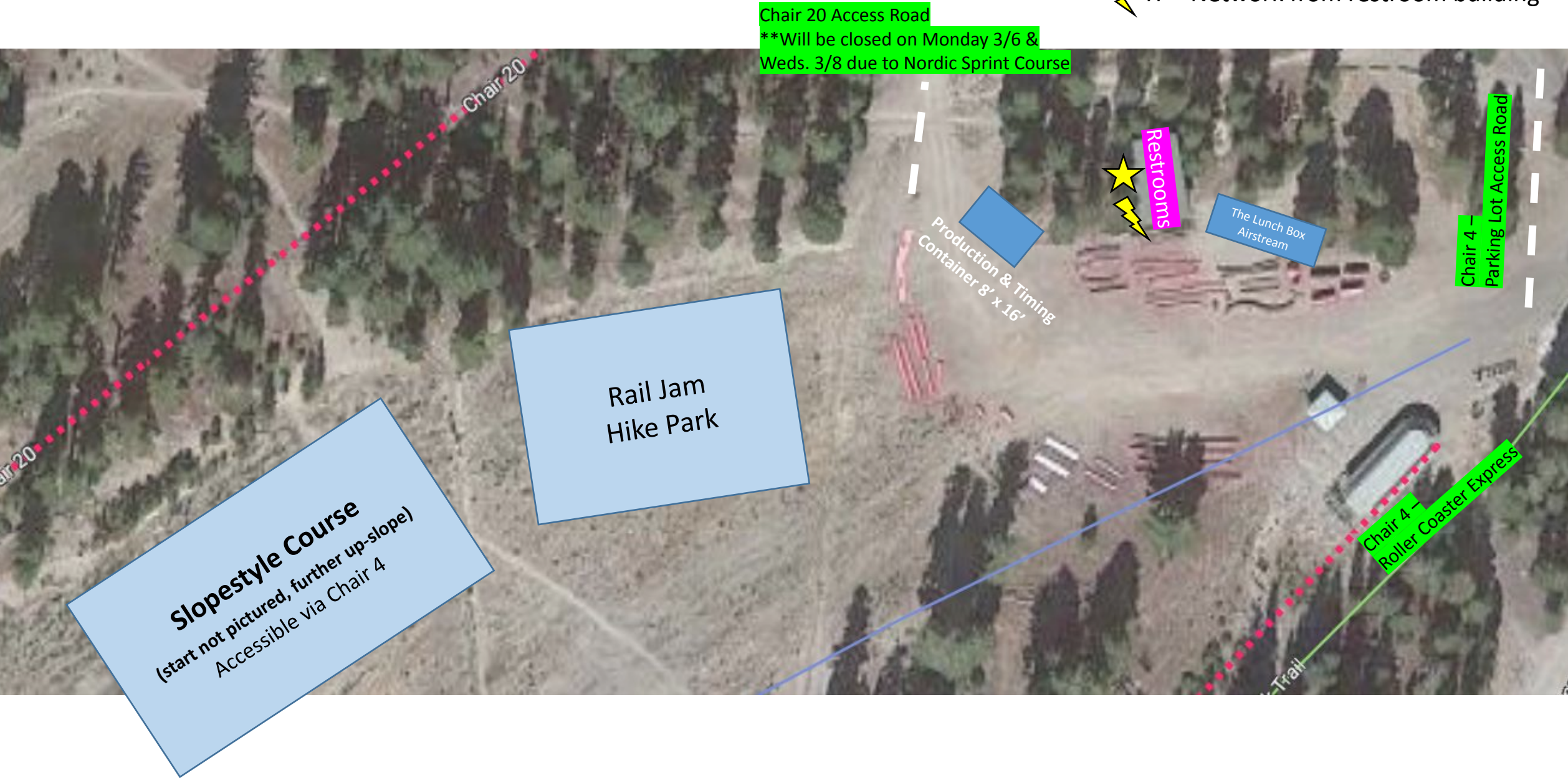
Red Line or Main Lodge Parking Shuttle

Parking – There is very limited first come, first served parking available in the lot along Minaret Road. There is overflow parking and close parking shuttle stops all along the road

Chair 4 / Lower South Park

Slopestyle & Rail Jam Event Zone

- ★ Power – Restroom building
- ⚡ IT – Network from restroom building



Alpine Venues

Public/Spectator Access & Start/Finish Areas

Alpine Race Venues

**Andy's Double Gold &
The Snowflakes/Fascination**

Slalom & Dual Slalom Starts

Giant Slalom will start on West Wall, to the skiers right of the Chair 1 exit. (indicated on map)

To Access:

- Take Chair 1/Broadway Express
- Exit Chair straight, then hang a right down Silver Tip
- Follow Silver Tip to Rusty's
- Top of Venue will be on your left

Spectator Viewing is available at the Finish area,
100 yards via snow from Main Lodge



Alpine & Main Lodge Hospitality Venues



Race Hills - Exact venues per Alpine race TBA



The Hilton

Timing (upstairs)

Broadcast Production (downstairs)



Power – draw from the building (see power breakdown)



IT – Network to the downstairs of the building for Broadcast
15 mbps up/down



Spectator Access – Walk from base of Chair 1 towards the Hilton, viewing access just outside the Finish line fencing

Main Lodge –

Opening Ceremonies

(Tusks Deck + Broadway Marketplace)

USCSA Check-in/Registration

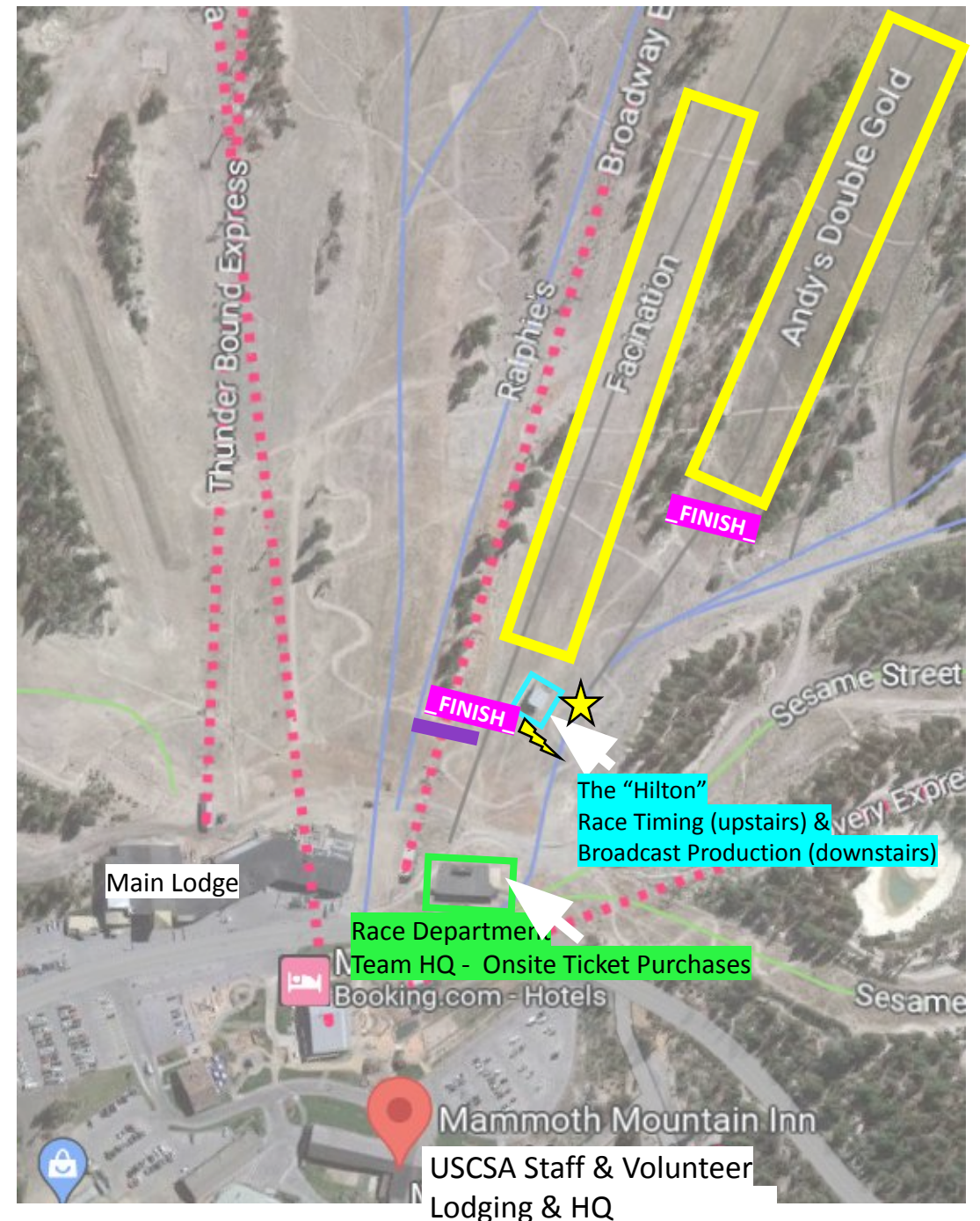
(Mountainside Conference Center)

Daily Awards & In-Person Team Captain's Meetings

(Mountainside Conference Center)

Mammoth Mountain Inn –

USCSA Staff & Volunteer HQ – Sierra Room





Chair 6
Unbound Express

MAIN
LODGE

Chair 1
Broadway Express

TEAM HQ/
RACE DEPT.

Free Public Parking

MAMMOTH MOUNTAIN INN